

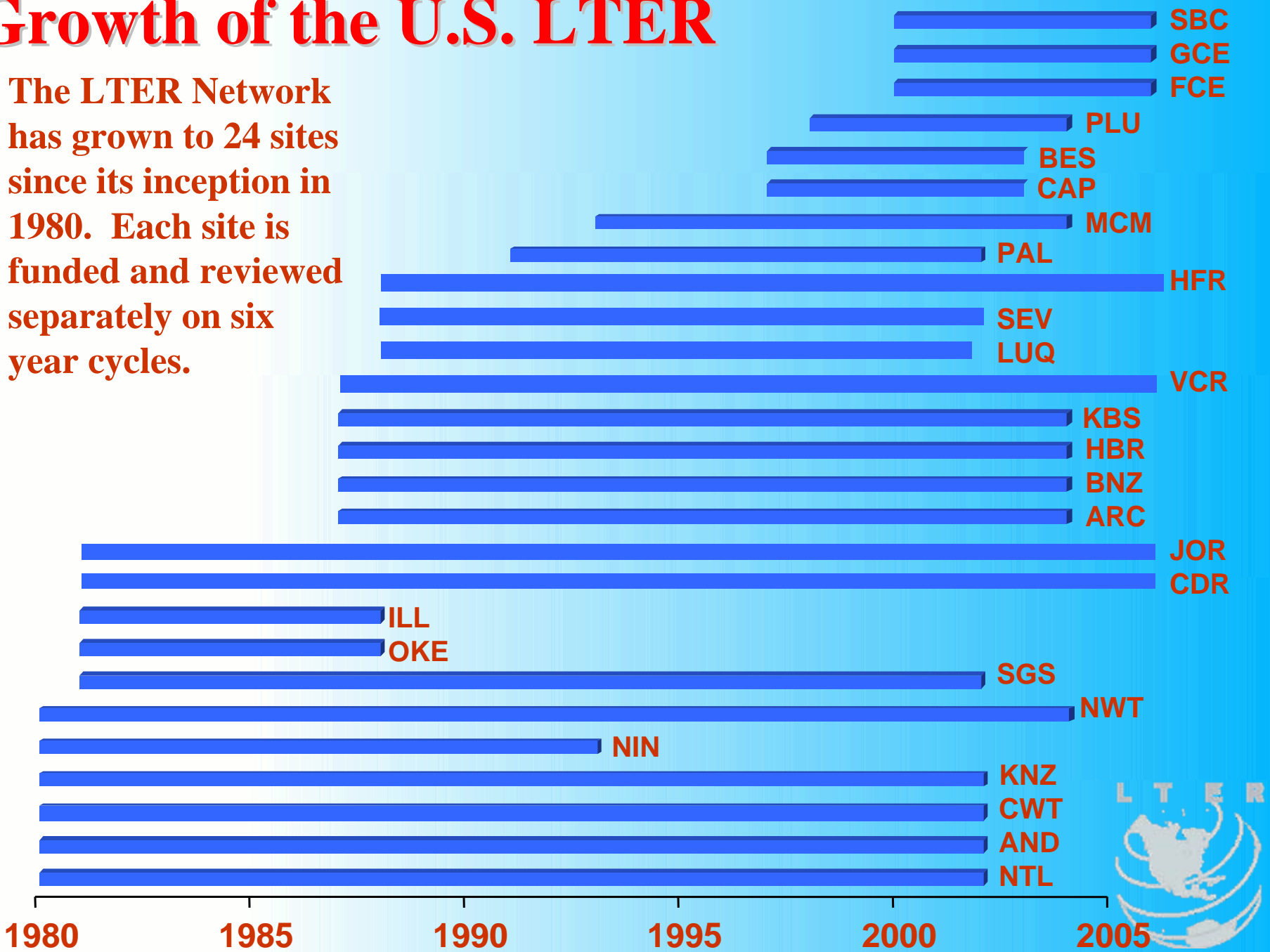


**The
LTER
Network**
24 sites
and 1200
investigators



Growth of the U.S. LTER

The LTER Network has grown to 24 sites since its inception in 1980. Each site is funded and reviewed separately on six year cycles.

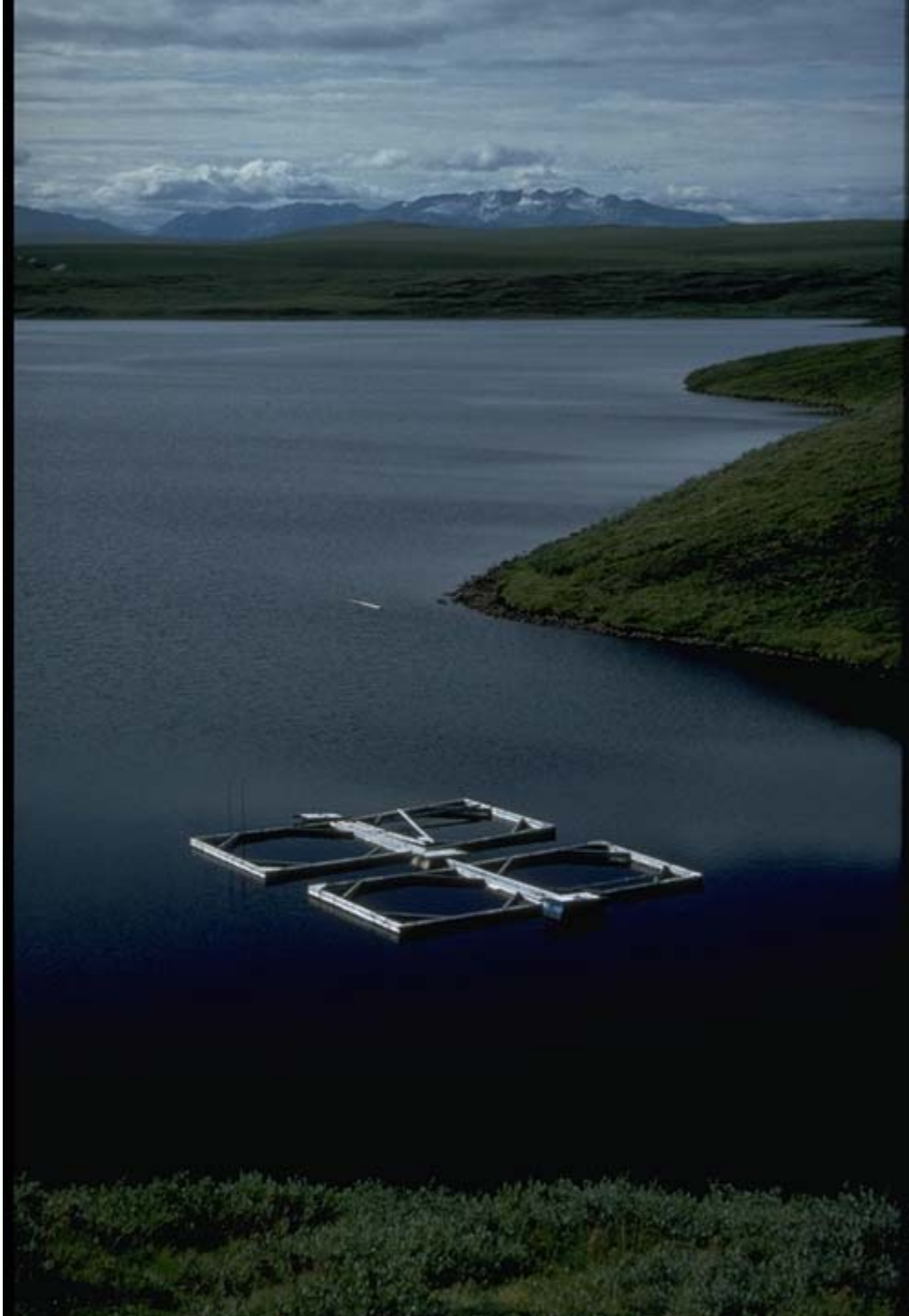














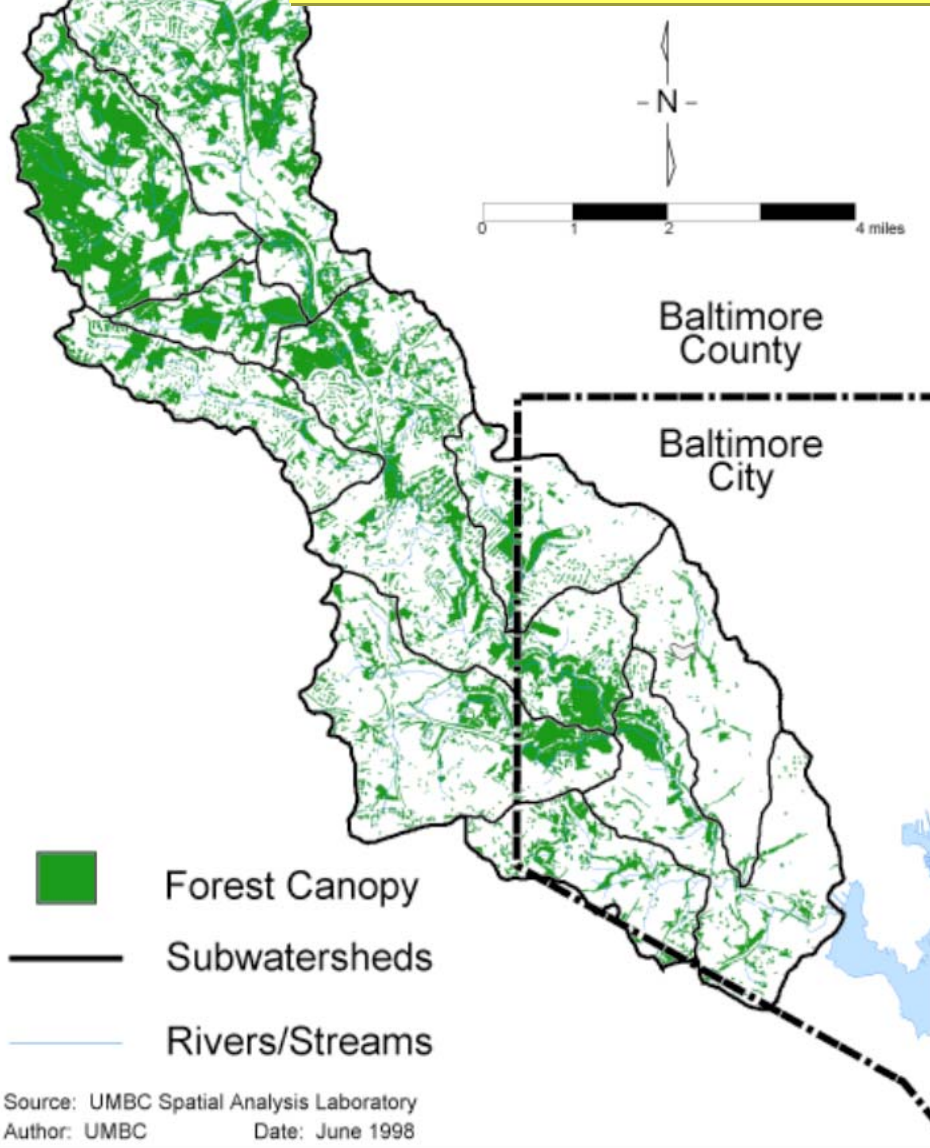
Baltimore, MD, site of the Baltimore Ecosystem Study LTER.





**Community garden in an abandoned lot,
Baltimore Ecosystem Study LTER. Researchers here will inform
residents of the research processes and results.**

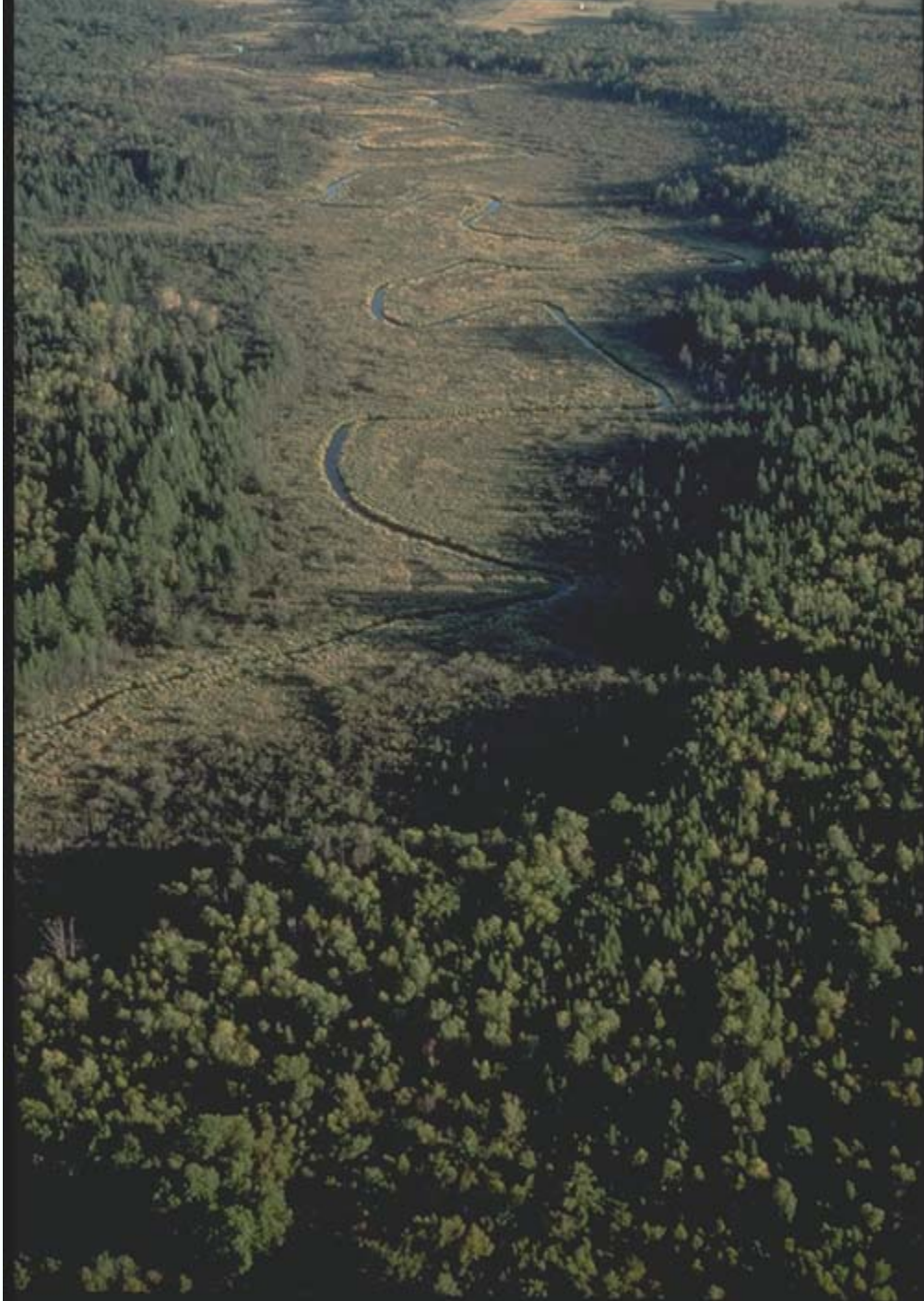
Forest Canopy in the Gwynn Falls Watershed, Baltimore Ecosystem Study LTER site.









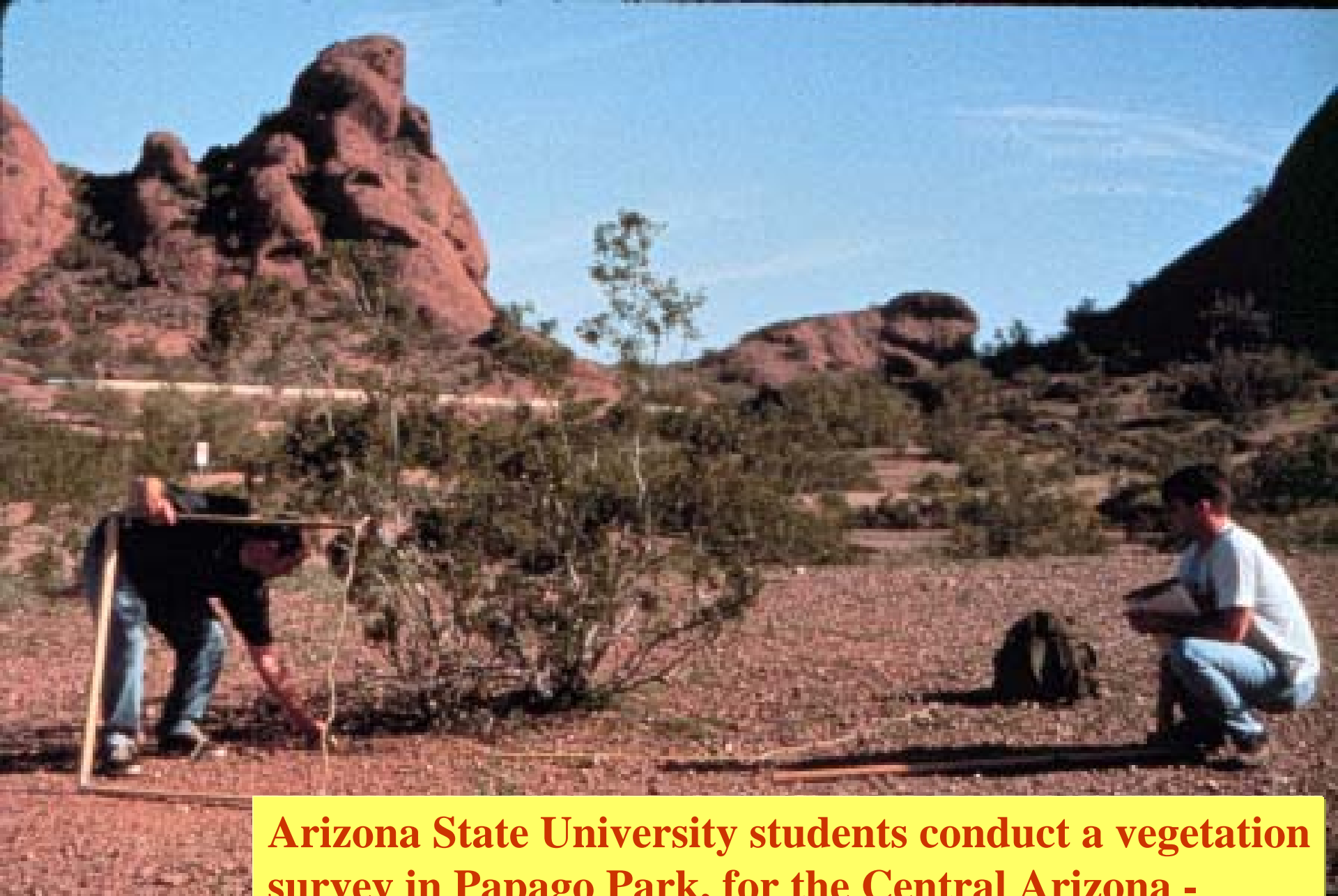






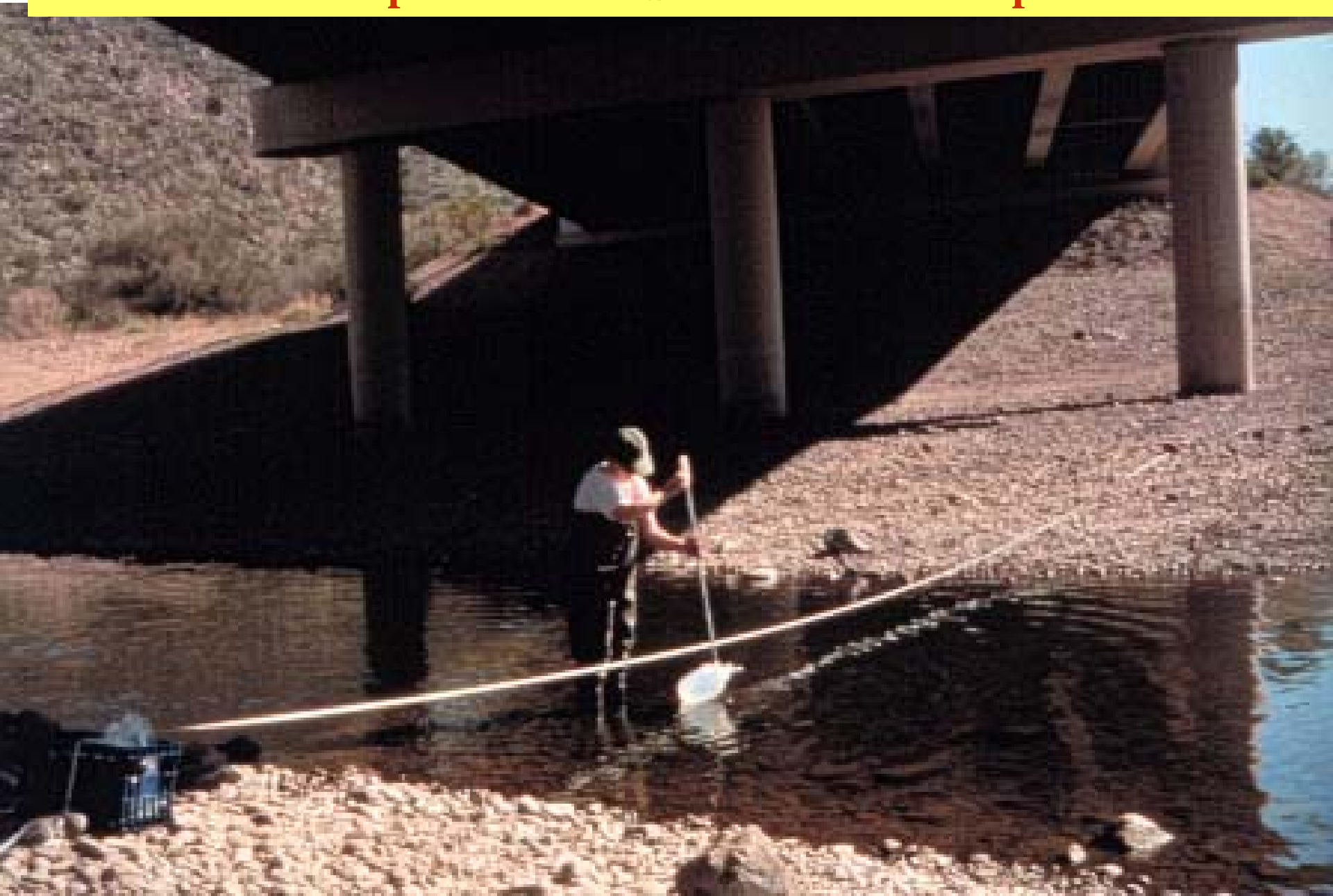
Researchers at the Central Arizona - Phoenix LTER site will examine the interactions of suburban residential development and the natural Sonoran Desert environment.



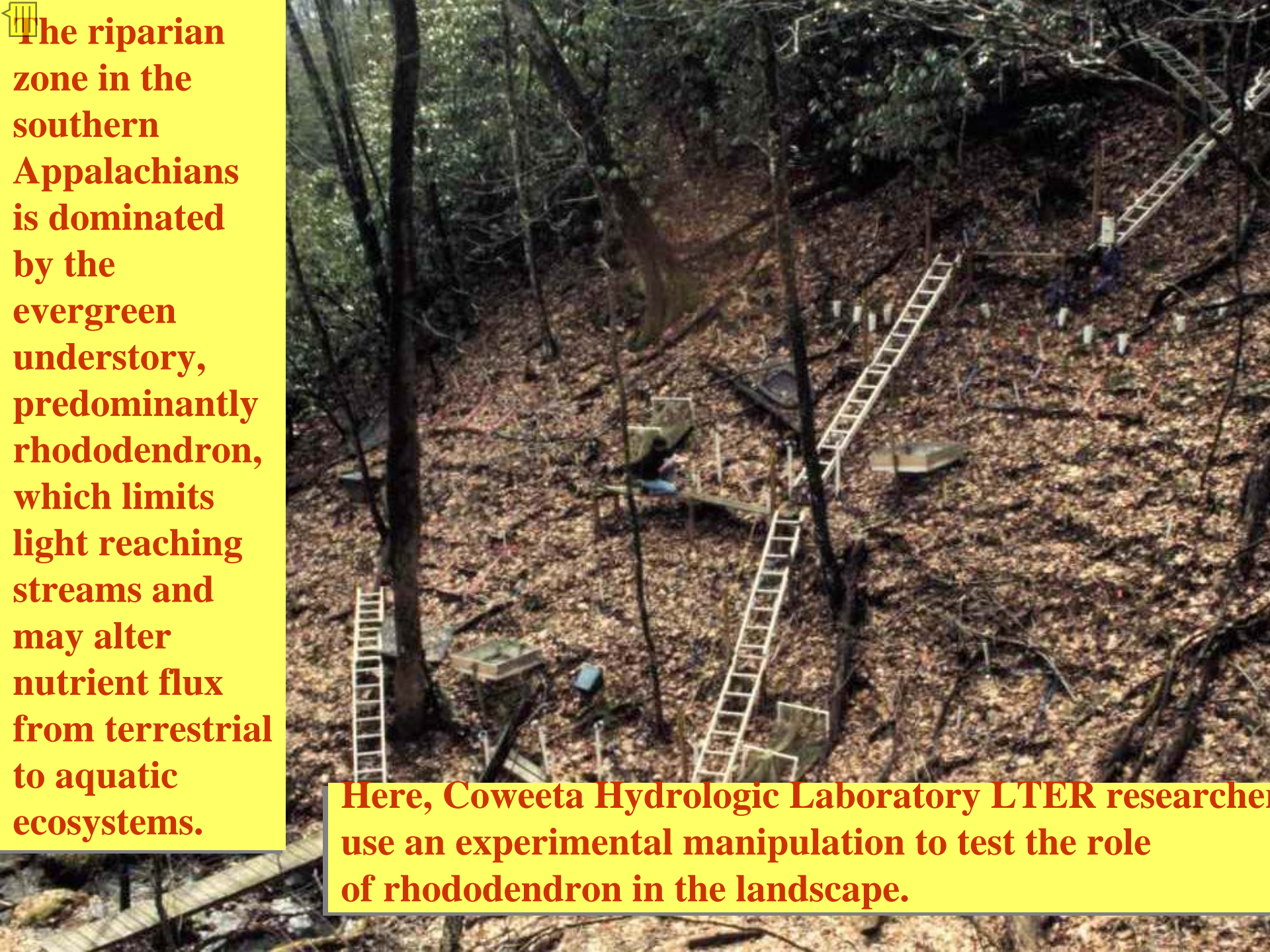


Arizona State University students conduct a vegetation survey in Papago Park, for the Central Arizona - Phoenix LTER site.

A Central Arizona - Phoenix LTER graduate research assistant collects water samples from the Salt River in metropolitan Phoenix.





An aerial photograph of a forest floor covered in brown leaves. Several white ladders are leaning against trees at different angles. There are also some small, rectangular plots or structures on the ground, and some white markers or stakes are visible. The forest is dense with trees and undergrowth.

The riparian zone in the southern Appalachians is dominated by the evergreen understory, predominantly rhododendron, which limits light reaching streams and may alter nutrient flux from terrestrial to aquatic ecosystems.

Here, Coweeta Hydrologic Laboratory LTER researchers use an experimental manipulation to test the role of rhododendron in the landscape.



































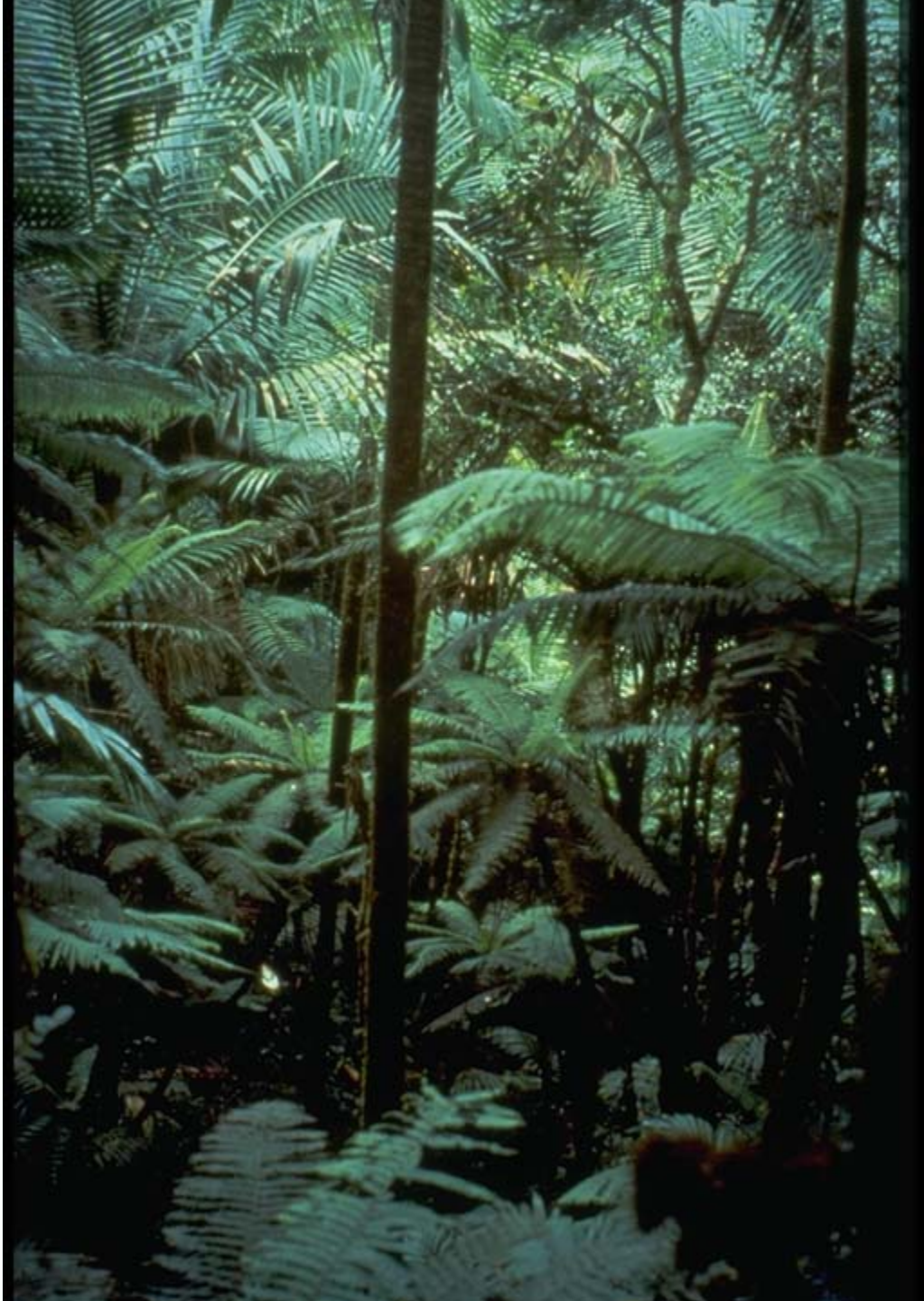




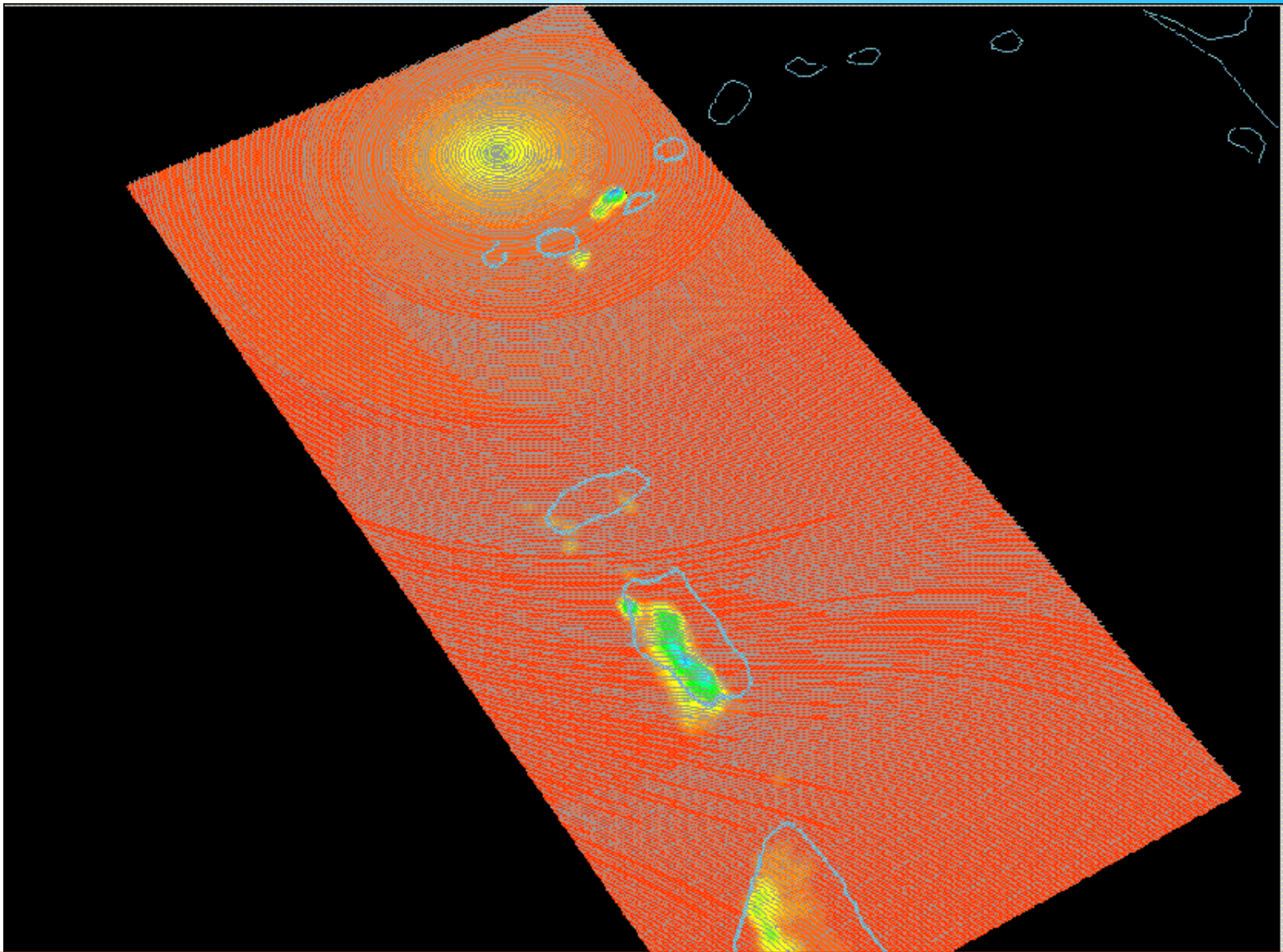












Collaborative research between SGS and LUQ led to a model of Hurricane Georges run on Blue Horizon at the San Diego Supercomputer Center









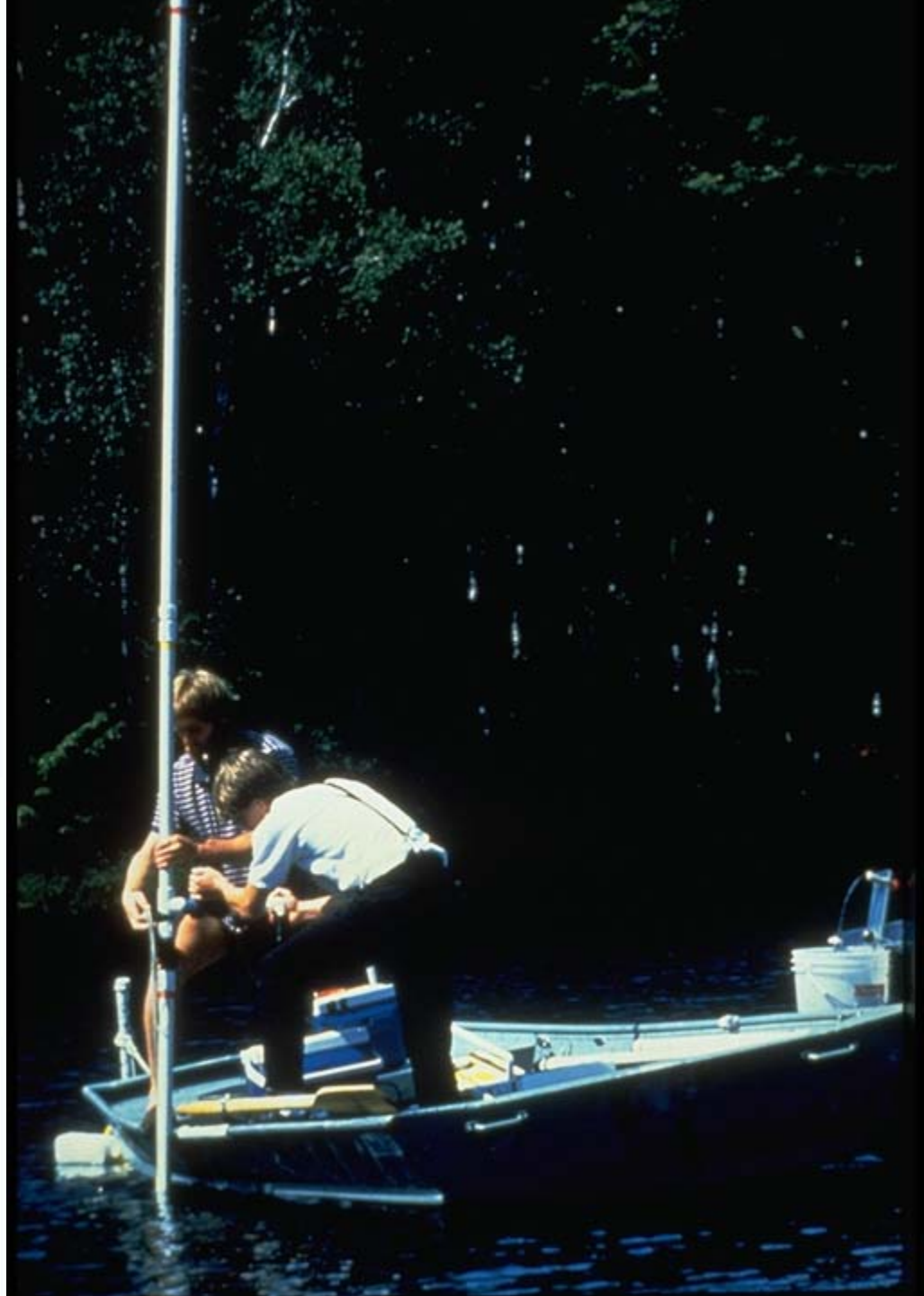


















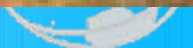
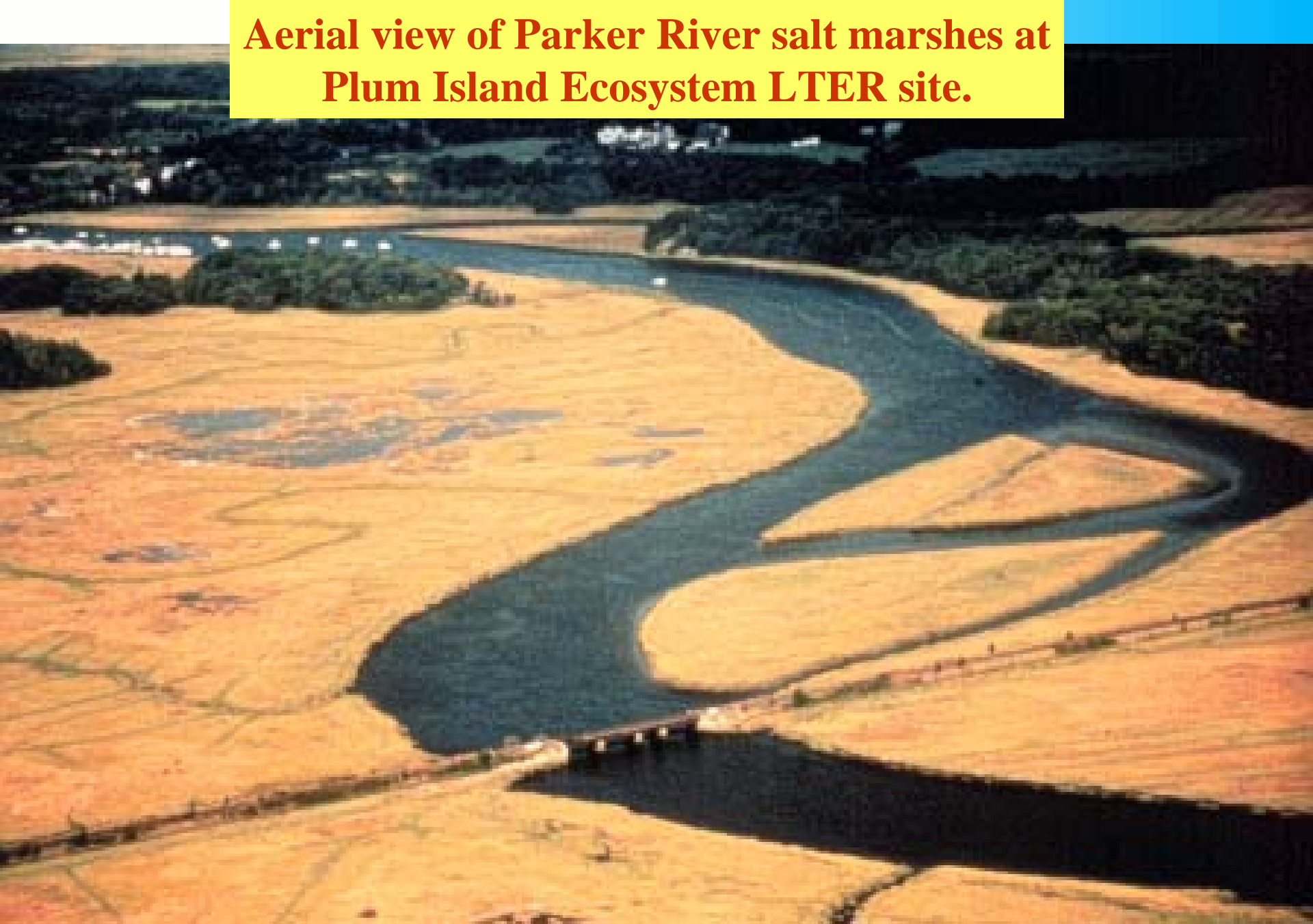
Aerial view of Plum Island Ecosystem LTER study site, including the Parker River, looking east toward the inlet. On the left is Plum Island Sound National Fish and Wildlife Reserve. On the right are extensive salt marshes. Low tide exposes many sandbars.



Plum Island Ecosystem LTER Site, Massachusetts

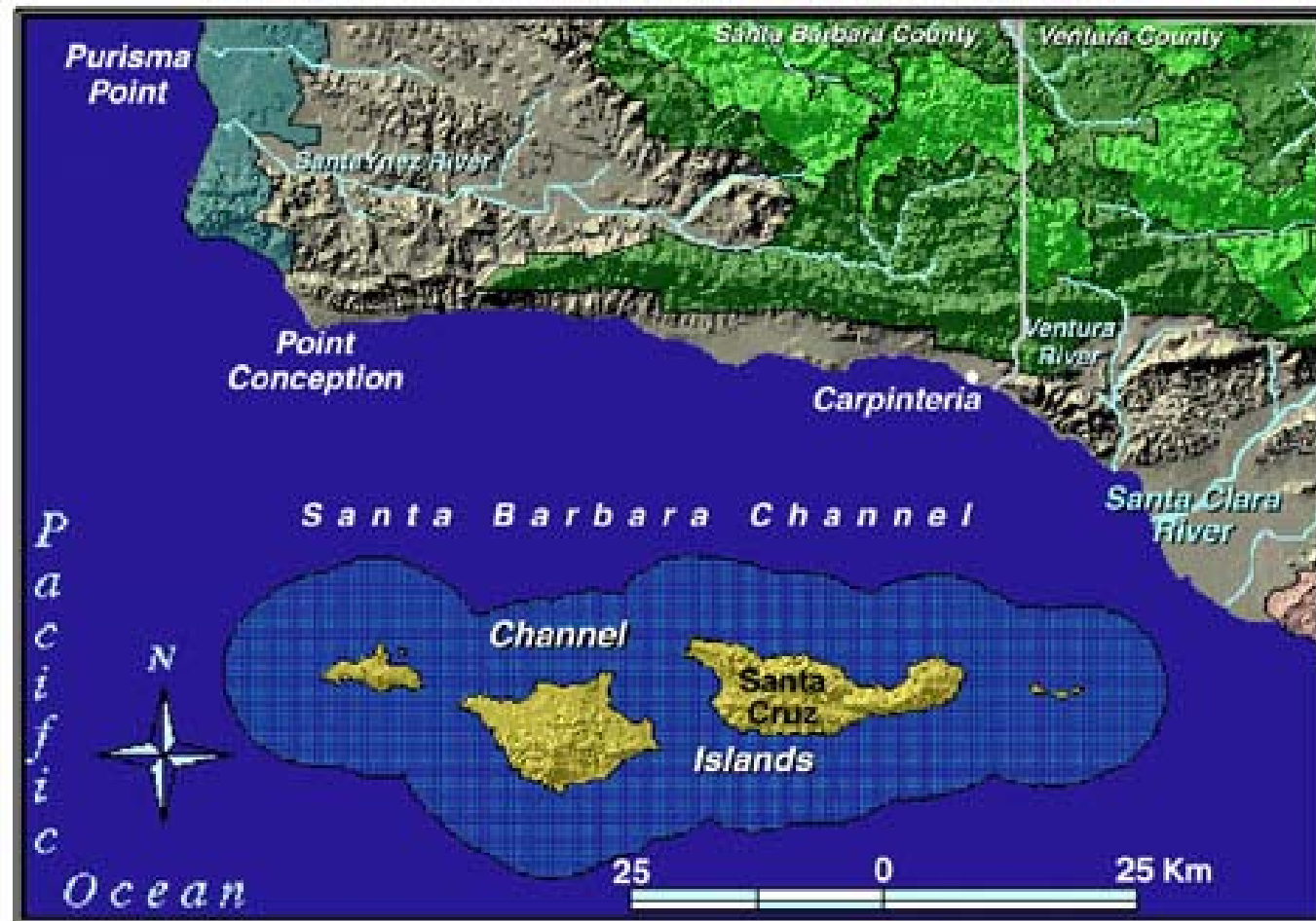


**Aerial view of Parker River salt marshes at
Plum Island Ecosystem LTER site.**



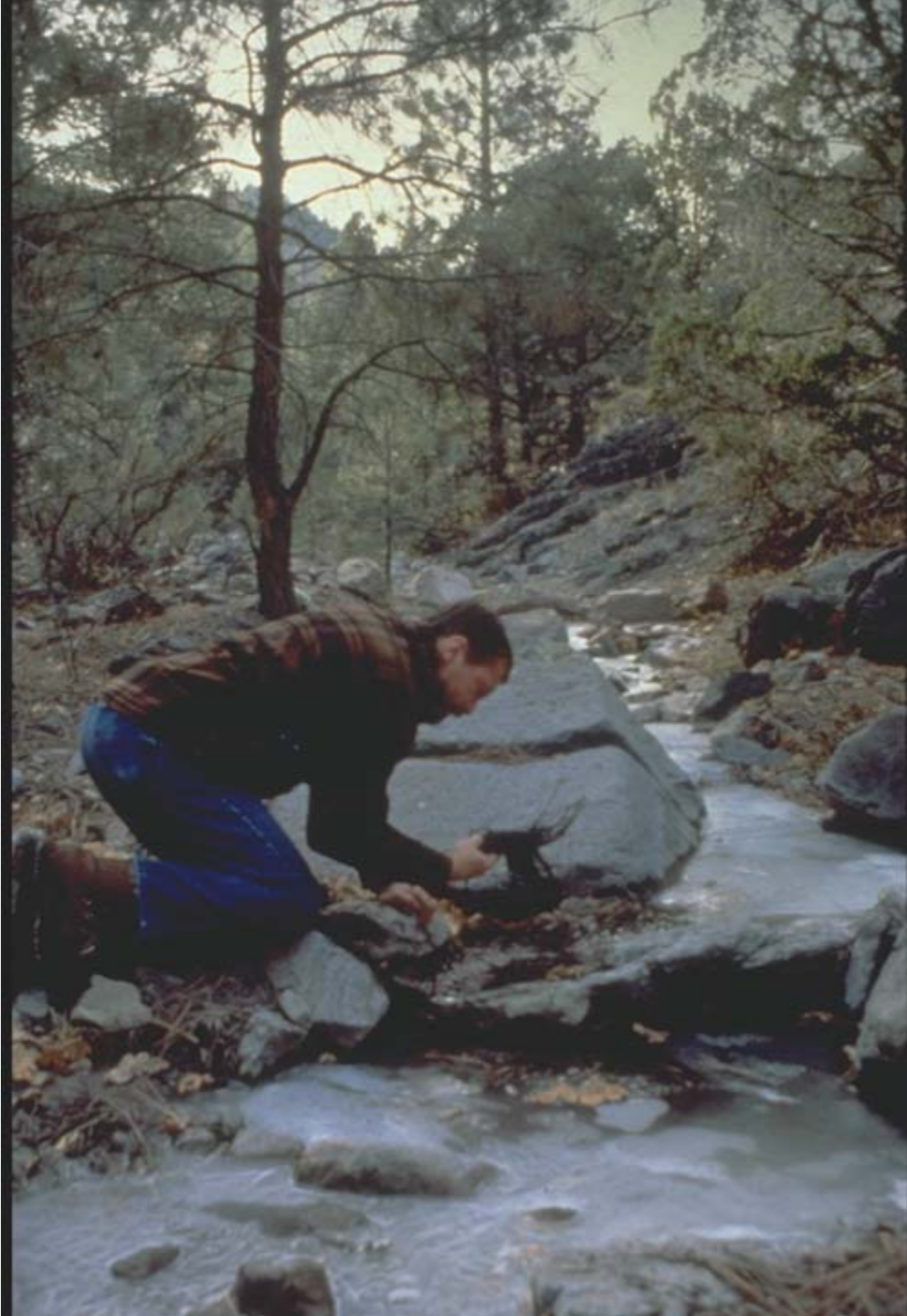


























International LTER students converge at the Andrews site -- part of the effort to broaden the scope of LTER across the globe.

International LTER

