

# LTER Network Office (LNO) Organizational Chart—2006

## Management and Planning

**Robert Waide, Executive Director**

- Facilitate development of cross-site and synthesis activities
- Develop interactions with non-LTER sites and programs
- Oversee operations of LNO and administer Cooperative Agreement

**Marjorie McConnell, Senior Program Manager**

- Coordinate management of major LNO projects
- Oversee accounting of LNO grants and contracts
- Coordinate report and proposal preparation

**James W. Brunt, Associate Director for Information Management**

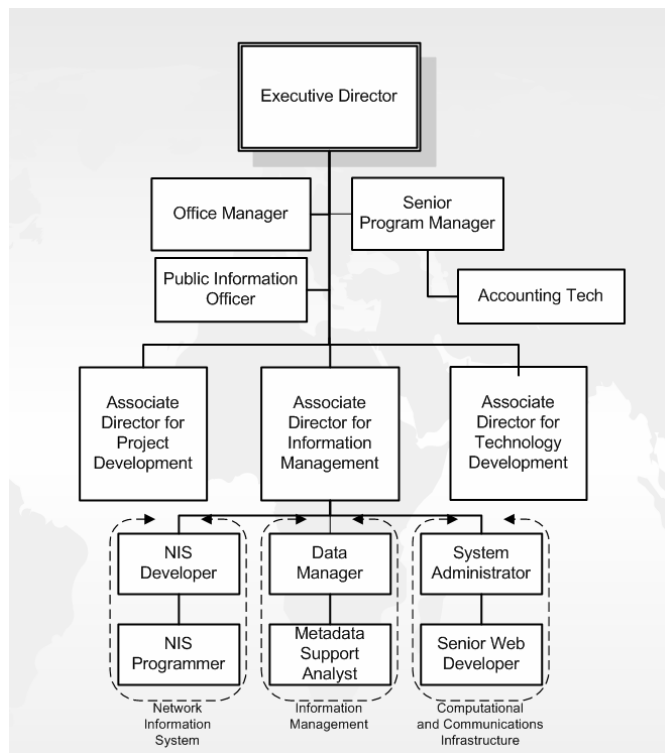
- Coordinate LNO information management activities with NIS Advisory Committee and Information Management Committee
- Coordinate and supervise systems, database, and web page administration in the LNO
- Provide a technical interface between LTER information management and other ecoinformatics efforts

**William K. Michener, Associate Director for Development**

- Coordinate LTER activities with other large, developing networks (e.g., NEON, NBII)
- Facilitate cyberinfrastructure development for LTER and ILTER
- Develop mutually beneficial activities with Federal agencies, international research programs and other networks, including ecoinformatics training and research

**John Vande Castle, Associate Director for Technology**

- Coordinate technology planning and implementation for the LTER Network
- Coordinate LTER technology with the development of the LTER Network Information System and serve as chair of the LTER Technology Committee
- Coordinate activities of the International LTER Network (summer, 2004)



## Meeting planning and facilitation

**Pamela Griego-Madrid, Office Manager**

- Meeting Coordination
- Management of day to day operation of LNO

**Doug Swearingen, Account Technician**

- Reconcile all expenditures related to the LNO
- Aid in projecting and balancing budgets for synthesis working groups and supplements to the LNO
- Maintain accounting system for LNO for cross-reference of expenditures

## Communication and Outreach

**McOwiti O. Thomas, Public Information Officer**

- Develop strategies, plans and activities for public information
- Develop public information products and tools
- Handle internal and external public and media relations

## Infrastructure

**Greg A. Shore, Systems Administrator**

- Administer computer, network, and associated security systems at the LNO
- Provide technical support to LNO staff, and to LTER sites on limited basis
- Maintain email, web, ftp, database, file, compute, and backup servers at LNO

**Marshall White, Senior Web Designer**

- Webmaster for the LNO
- Develop, design, and maintain websites hosted by the LNO
- Perform system administration tasks and duties
- Provide web development assistance to the LTER Network

**David Farris, User Tech Support/Lab Manager**

- Maintain Informatics Training and Usability Testing Laboratory

## Information Management

Jeanine McGann, *Database Manager*

- Design and write web page interfaces
- Update LTER web sites
- Maintain Network databases

Inigo San Gil, *NIS Support Scientist*

- Provide assistance on EML standard data compliance
- Transform NBII Biological Data Profile to the EML standard
- Provide support to LTER sites to achieve EML goals

## Network Information System

Mark Servilla, *NIS Lead Scientist*

- Design and implementation of LTER Network Information System
- Coordinate integration of LTER partner site's computing and data infrastructure
- Enable cross-site synthesis through cyber-infrastructure technology

Duane Costa, *NIS Programmer Analyst*

- Develop NIS software and technologies
- Develop EML tools and harvesting software
- Administer LNO Metacat metadata repository

## Science Environment for Ecological Knowledge (SEEK) Project

Deana Pennington, *Research Assistant Professor*

- Develop cyberinfrastructure for ecology
- Computer-assisted, integrated analysis of field, GIS, sensor and image data
- Environmental- and eco-informatics

Samantha Romanello, *Post Doctoral Fellow*

- Education, outreach and training for SEEK

David Sledge, *Web Designer*

- SEEK web site management and web tools development
- Programming of web applications, web services and grid services for SEEK using Java/J2EE, SQL, etc.

Laura Downey, *Usability Engineer*

- Conduct user needs and task analysis
- Design user interfaces
- Conduct usability evaluation and testing

Jianting Zhang, *Postdoctoral Associate DARPA*

- Incorporate geospatial processing into Kepler
- Investigate new algorithm development in Kepler

The LNO has established an automated system to track requests for assistance from LTER sites and scientists and responses to those requests. Requests relating to technical support (web pages, data bases, e-mail, etc) should be sent to [tech\\_support@lternet.edu](mailto:tech_support@lternet.edu). Requests relating to logistic/administrative support (meetings, reimbursements, working groups, etc) should be sent to [office\\_support@lternet.edu](mailto:office_support@lternet.edu). If you prefer to speak to someone in the Network Office directly regarding a request, please contact the appropriate person as shown below:

Meeting organization

Contact Pam at 505/277-2551 ([pgriego@lternet.edu](mailto:pgriego@lternet.edu))

NEON

Contact Bill at 505/277-2769 ([bmichener@lternet.edu](mailto:bmichener@lternet.edu))

Changes in LTER web pages

Contact Jeanine at 505/277-2756 ([jmcgann@lternet.edu](mailto:jmcgann@lternet.edu))

SEEK

Contact Samantha ([sromanello@lternet.edu](mailto:sromanello@lternet.edu))

Changes in personnel and site databases

Contact James at 505/277-2578 ([jbrunt@lternet.edu](mailto:jbrunt@lternet.edu))

LTER Network Information

Contact Bob at 505/277-2649 ([rwaide@lternet.edu](mailto:rwaide@lternet.edu))

Information/assistance on the NIS or EML

Contact Mark at 505/277-2619 ([mservilla@lternet.edu](mailto:mservilla@lternet.edu))

Or Inigo at 505/277-2625 ([isangil@lternet.edu](mailto:isangil@lternet.edu))

Technology issues/remote sensing database

Contact John at 505/277-2634 ([jvc@lternet.edu](mailto:jvc@lternet.edu))

Site web design and development

Contact Marsh at 505/277-2667 ([mwhite@lternet.edu](mailto:mwhite@lternet.edu))

Communication and public outreach

Contact McOwiti at 505/277-2638 ([tmcowiti@lternet.edu](mailto:tmcowiti@lternet.edu))