



LTER Network Office Organizational Chart - 2007

Management Planning

Robert Waide, Executive Director

- Facilitate development of cross-site and synthesis activities
- Develop interactions with non-LTER sites and programs
- Oversee operations of LNO and administer Cooperative Agreement

Marjorie McConnell, Senior Program Manager

- Coordinate management of major LNO projects
- Oversee accounting of LNO grants and contracts
- Coordinate report and proposal preparation

James W. Brunt, Associate Director for Information Management

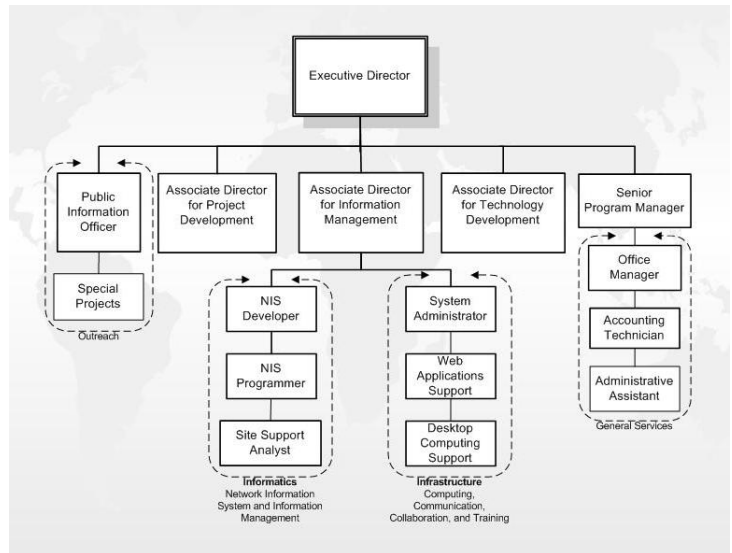
- Coordinate LNO information management activities with NIS Advisory Committee and Information Management Committee
- Coordinate and supervise systems, database, and web page administration in the LNO
- Provide a technical interface between LTER information management and other ecoinformatics efforts

William K. Michener, Associate Director for Development

- Coordinate LTER activities with other large, developing networks (e.g., NEON, NBII)
- Facilitate cyberinfrastructure development for LTER and ILTER
- Develop mutually beneficial activities with Federal agencies, international research programs and other networks, including ecoinformatics training and research

John Vande Castle, Associate Director for Technology

- Coordinate technology planning and implementation for the LTER Network
- Coordinate LTER technology with the development of the LTER Network Information System and serve as chair of the LTER Technology Committee
- Coordinate activities of the International LTER Network (Summer 2004)



The LNO has established an automated system to track requests for assistance from LTER sites and scientists. Requests for technical support (web pages, databases, e-mail, etc.) should be sent to tech_support@lternet.edu. Requests for logistic or administrative support (meetings, reimbursements, working groups, etc.) should be sent to office_support@lternet.edu. To speak to someone in the Network Office directly regarding a request, please contact the appropriate person on the list below:

Meeting organization

Contact Celina at 505/277-2551 (cgomez@lternet.edu)

Changes in LTER web pages

Contact Marsh at 505/277-2667 (mwhite@lternet.edu)

Changes in personnel and site databases

Contact James at 505/277-2578 (jbrunt@lternet.edu)

Information/assistance on the NIS or EML

Contact Mark at 505/277-2619 (mservilla@lternet.edu) or Ingo at 505/277-2625 (isangil@lternet.edu)

Site web design and development

Contact Marsh at 505/277-2667 (mwhite@lternet.edu)

LTER Network Information

Contact Bob at 505/277-2649 (rwaide@lternet.edu)

Technology issues/remote sensing database

Contact John at 505/277-2634 (jvc@lternet.edu)

Communication and public outreach

Contact McOwiti at 505/277-2638 (tmcowiti@lternet.edu)