

The Review of Reviews

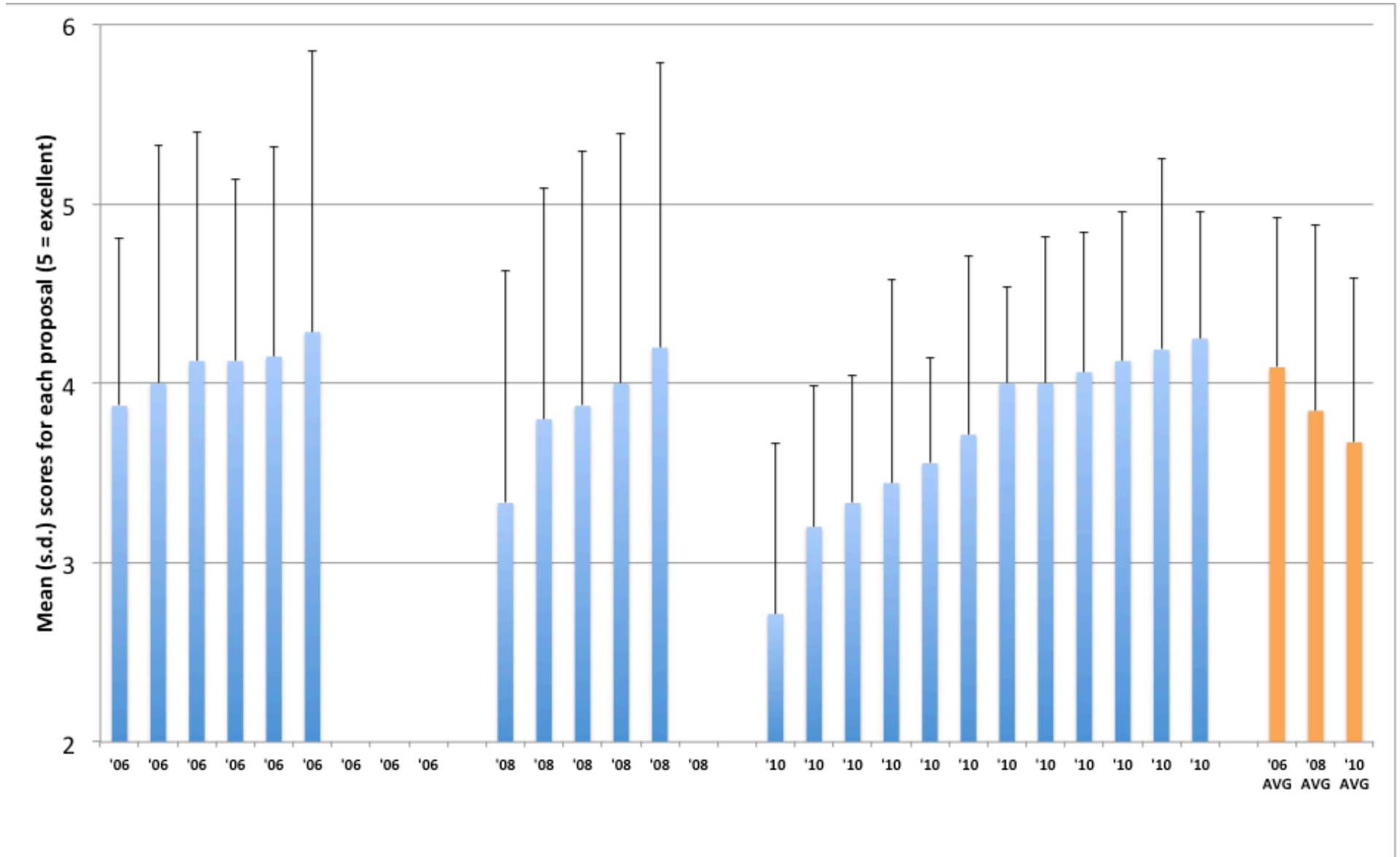
LTER renewal proposals 2006-2010

Steve Hamilton, Hugh Ducklow, Bob
Waide, Phil Robertson

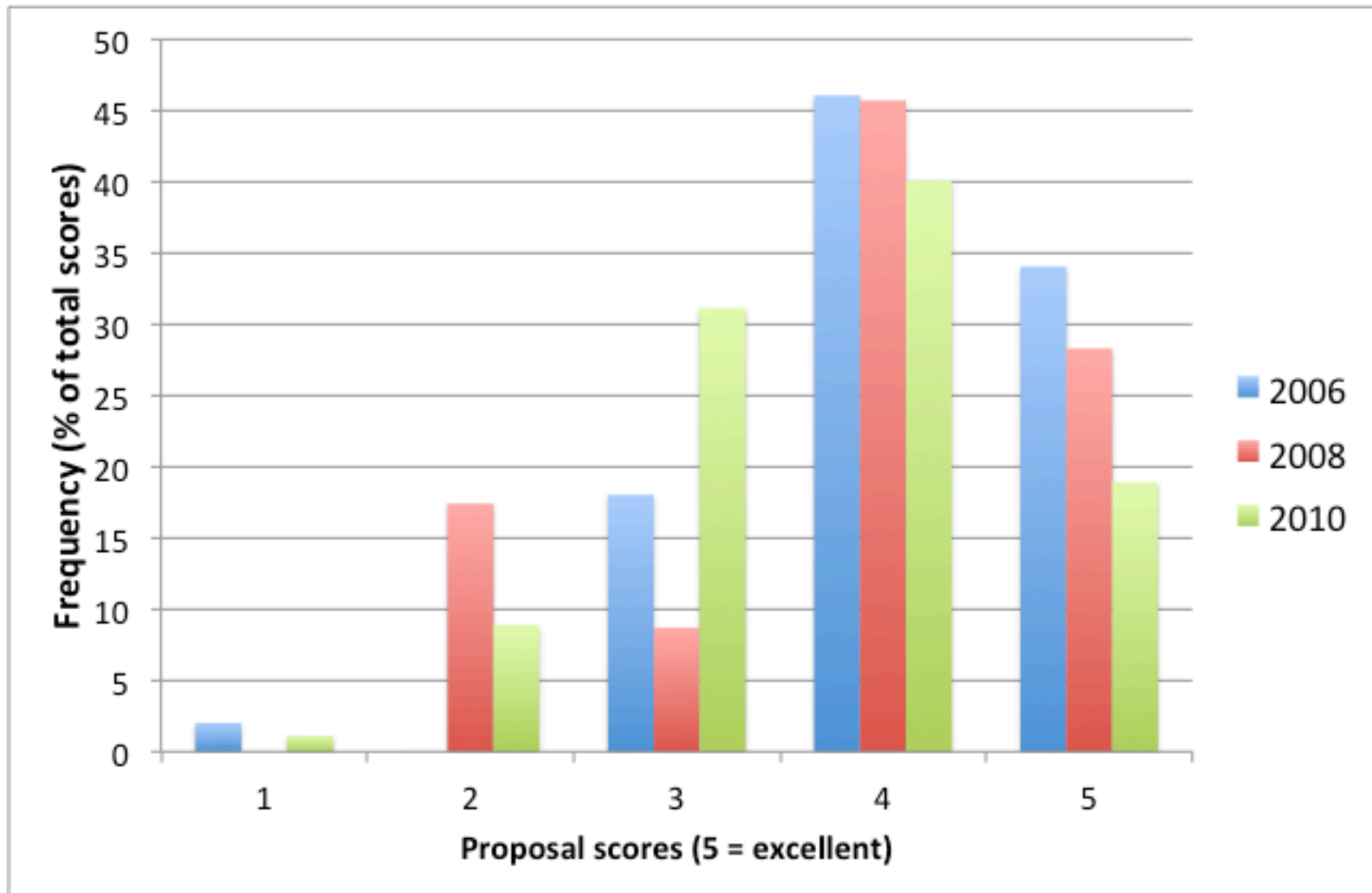
The question: Have reviews been consistent over the years?

- 2010 seemed a bit harsh...
 - Of 12 proposals reviewed, only 4 were renewed unconditionally
 - 1 site terminated
 - 2 put on probation, another recommended for probation
 - 4 required to submit addenda
- In 2006 + 2008, 11 of 15 proposals were renewed unconditionally; 1 probation
- We reviewed Panel Summaries as well as numerical scores for 2006, 2008, 2010 rounds

Numerical ratings: Means by site



Numerical ratings: Distribution



The three most commonly cited faults in the 2010 renewal proposals

- Responses to mid-term reviews were inadequate
- Need better integration among research areas and team members
 - Breadth/depth tradeoff causes tension
- Conceptual model (and other models) must clearly link to research activities
 - ISSE as a model variably praised or criticized depending on how well it fit the site

What else was often cited as lacking?

- Lacked new and exciting research ideas/theory
 - Need “greatest hits” in Results of Prior Support
- Need to do research that is uniquely possible in a long-term program
- Microbial ecology, food web theory, human dynamics cited as inadequately treated in certain proposals
 - Recruitment of new co-PIs often suggested as solution
- Quantitative modeling: Necessary, but can attract criticism

What else was often cited as lacking?

- Management issues
 - No leadership transition plan
 - No external advisory committee
- IM efforts not up-to-date or up to standards
 - Data not fully available through LNO repository
- Publication productivity: Judgment seemed subjective
- Education and outreach, IM efforts generally drew praise