

# 2017 LTER Information Management Committee Annual Meeting Report

*Hosted in conjunction with Earth Science Information Partners (ESIP) Summer Meeting*

July 24, 2017; Bloomington, Indiana



<http://im.lternet.edu/news/meetings/2017>

## Introduction

The 2017 Annual LTER Information Managers meeting was held at the Indiana University, Bloomington, hosted in conjunction with the Earth Science Information Partners (ESIP) Summer Meeting. LTER Information Managers, LTER Network Communications Office (NCO) representatives, Environmental Data Initiative (EDI) representatives and others gathered to discuss issues related to LTER Information Management, the working relationships between the newly formed organizations and information management in this new era. Three new LTER sites are also coming onboard and the new Information Managers attending this meeting are seeking input on their data management plans and other collaborative efforts.

## Contents

Attendees

Agenda at a Glance

LTER Participation in ESIP Meeting

Elections

General Meeting Summaries

- General Group Discussion

- Call to NSF

- Working Group Updates

- Afternoon Breakout Groups

- Wrap-up and Action Items

Supporting Documents

- Detailed Agenda

- IMC Annual Meeting Overview Slides

- Lightning Talks

  - Taxonomic Coverage – John Porter

  - Mini-metabase for generating EML – Li Kui

  - EML Packages from the GCE Data Toolbox – Wade Sheldon

- Breakout Groups

  - ToR updates

  - Vision for IM

  - PASTA ECC new checks (datetime)

- New LTER Site IM's present their data management plans

  - Beaufort Sea Lagoon Ecosystems (BLE) – Tim Whiteaker

  - Northeast U.S. Shelf (NES) Stace Beaulieu (No archived presentation)

  - Northern Gulf of Alaska (NGA) – Rob Bochenek

## Attendees

Suzanne Remillard (AND), Don Henshaw (AND), Jonathan Walsh (BES), **Tim Whiteaker** (BLE), Jason Downing (BNZ), Stevan Earl (CAP), Brian Herndon (CWT), Kristin Vanderbilt (FCE/EDI), Wade Sheldon (GCE), Adam Sapp (GCE), Mary Martin (HBR), Emery Boose (HFR), Sven Bohm (KBS), Yang Xia (KNZ), Eda Melendez (LUQ), **Renée F. Brown** (MCM), Gastil Gastil-Buhl (MCR), **Stace Beaulieu** (NES), **Rob Bochenek** (NGA), Corinna Gries (NTL/EDI), Hope Humphries (NWT), **Li Kui** (SBC), Margaret O'Brien (SBC/EDI), John Porter (VCR), Duane Costa (EDI), Mark Schildauer (NCO), Julien Brun (NCEAS), Pier Luigi Buttigieg (GUEST), Karen Baker (GUEST)

***\*bold names are new site IMs attending their first annual IMC meeting***

Attended Remotely: James Conners (CCE/PAL), Dan Bahauddin (CDR)

Unable to Attend: Jim Laundre (ARC), Ken Ramsey (JRN), Hap Garrit (PIE), vacant (SEV)

## Agenda at a Glance

08:00	Welcome and review of agenda
08:15	LTER IMC-EDI updates and discussion
08:40	LTER IMC-NCO updates and discussion
09:20	Advertisements (30 seconds each) of ESIP Sessions led by IMC or EDI people
09:45	NSF call with Peter McCartney including pre and post discussion
10:45	Group Photo (Courtyard) and break
11:00	Working Group Updates
11:45	Business Meeting
12:00	Lunch
01:00	Lightning Talks (2 minutes each)
01:05	Breakout Sessions
02:50	Break
02:55	Breakout Report Backs
03:55	Break
04:00	New site IM's present data management plans
05:00	Wrap-up and Action Items
05:30	Meeting Adjourned
07:00	Group dinner at The Irish Lion

## **LTER Participation in ESIP Meeting**

Tuesday, July 25 • 9:30am - 11:00am

Create EML Using R and Share the Script via the Information Management Code Repository  
Corinna Gries

Tuesday, July 25 • 2:00pm - 3:30pm

Use Application Programming Interfaces of Data Repositories to Create Local Data  
Catalogs Duane Costa • Stevan Earl • Gastil Gastil-Buhl • John

Tuesday, July 25 • 2:00pm - 3:30pm

Tools and Strategies for End-to-End Sensor Data Management  
Matthew Bartos • Mike Botts • Mike Daniels • Wade Sheldon

Tuesday, July 25 • 4:00pm - 5:30pm

Developing an Information Management Code Repository Colin Smith  
Kristin Vanderbilt

Wednesday, July 26 • 4:00pm - 5:30pm

Annotating datasets with measurement classes from the Ecosystem Ontology (ECOS)  
Margaret O'Brien • Mark Schildhauer

Wednesday, July 26 • 7:00pm - 9:00pm

Research as Art at the WonderLab

LTER IM Posters Include:

BES Arts and Science Integration Program (Jonathan Walsh)

DEIMS: An IMS for Scientific Research (Eda Melendez)

Luquillo LTER - LCZO Collaboration in Data Collection and Management (Eda Melendez)

Thursday, July 27 • 9:00am - 10:30am

Sustainable Data Management, Return on Investment  
Margaret O'Brien • Anne Wilson

## **Elections**

Jonathan Walsh & Yang Xia are rotating off of IM-Exec members. Thank you for your service.

Two nominations for 2 IM-Exec positions. Suzanne Remillard & Jason Downing are unanimously elected. Thank you for agreeing to serve.

# General Meeting Summaries

## General Group Discussion

### LTER-NCO Discussion

- Mark Schildauer & Julien Brun are present representing NCO.
- Mark is retiring as director of computing at NCEAS, but is still working on some projects (Artic data center, SNAP science nature and people, partnership, SEEK controlled vocab and semantics; semantic ontology)
- Work on ontologies continues at NCEAS, ESIP, etc.
- Currently 5 synthesis working groups at NCEAS. These science synthesis groups are ultimate data congruency checker. Opportunity to learn.
- Matt Jones will work more closely with Marty on LTER cyberinfrastructure.
- Julien works on mentoring education using remote sensing and will take over managing working groups at NCEAS. He codes in R and Python and has GIS skills. He aids working groups in pulling data together. Working groups were able to spin up quickly due to LTER data resources. There are issues of channels of communications to EDI that need to be resolved.
- Guest: Pier Luigi Buttigieg – polar research in Germany; works on semantics for environmental; expert knowledge engineer (sweet semantics group)
- Gastil provided some topics from Marty. She presented a slide on NCO infrastructure with the overview slides
- Marty works with Communications and Educations reps
- Status of network databases:
  - BiblioDB is on hold while NCO finds generic solution
  - PersonnelDB and SiteDB are archived
  - ClimHy is up in the air
- LTER website is contracted to a web design firm (NDIC). Marty is looking for input from sites.
- Databits – another conversation; what's the future? Databits might become part of larger blog at NCO. Or continue as journal at EDI.
- IM webpage may go away or migrate to IM.lternet.edu.
- Mailing lists are moving over to Google Groups and site specific lists going away

### LTER-EDI Discussion

- No formal presentation prepared, but discussion based on notes on agenda.
- EDI is the now the name of the repository. EDI provides a default citation following ESIP recommendations. Includes name of repository. Recommend putting LTER site in the dataset title. Data can be downloaded from many sources. The dataset needs to carry its own identity.
- DataONE citation refers to source of the data. DataONE is really a search engine.
- DOI resolves to the owner which is EDI, but should say which repository the data was obtained
- EML creators (individuals) are currently shown in the citation.
- Not all repositories / search engines will use the same EML fields in citations. So it may be a good idea to put the site in the dataset title. A temporary solution.
- The EML creator may be an organization. This option is not currently used by DataONE for searches

- How do we get our projects on the EDI agenda? Talk to EDI.
- Use EDI RFC mechanism to get feedback on ideas.
- EDI should maintain a list of projects to work on. But it cannot handle proposals of any kind.
- Responses to RFC on SiteDB have not been shared.
- EDI advisory board will start up in October. Mary Martin is our representative. Face-to-face meeting in spring. Also includes Peter Arzberger, Aaron Ellison, Rebecca Costella, and Ian Foster.
- EDI welcomes input & comments from IMC. EDI does not want input from IMC to select someone to be on the advisory board, they think it should be their selection.
- Encourage general conversation now. Formalize lines of communication later.
- EDI will also assume responsibility for units.
- Upcoming RFC. What should be tackled first? ClimHy, units, etc.
- Oxford Press has expressed interest in using the LTER controlled vocabulary.
- Successful thematic standardization workshop led by Margaret; community data model; several databases have been converted to that data model. See ongoing blog on EDI website.
- EDI is looking for suggestions on next workshop.
- IM-Exec is accepting requests for water coolers up to 6 months in advance.
- EDI wants many to many conversations; no layers to communicate; we can formalize the pathways later; therefore, IMC should have planned discussions to coalesce to get our best ideas out and then take them to EDI.
- Julien asked how many IMs have been contacted by NCO working groups. No one raised a hand.
- EDI would like to hear what the next data package design pattern workshop.
- Site characteristics for climate stations across sites.
- In person training workshop in the fall 2017; topic isn't decided; what other training do we want?
- EDI training sessions on Tuesdays
- Collin is EDI information manager.

## Databits

- EDI is willing to host DataBits (including past issues). Include larger environmental IM community.
- An alternative would be tagged blog entries on NCO web page. But blog is not an editorial process. Databits was treated as more than a community newsletter; an edited publication. We could bridge the Databits publication to the blog by posting some current published article.
- Databits would include editorial filtering. There were a few instances where this was required. Open blog would not include any filtering.
- An editor (and themed issues) would help to generate content (Karen Baker reiterated the importance of having an editor that contacts people; pushes, motivates; everyone is very busy).
- Few submissions recently. Move to 1 issue per year? Align with some activity?
- Editor is really a coordinator (not much editing).
- Keep in mind that Databits is a newsletter, not a journal. Used to include brief sitebytes.
- EDI could serve as coordinator. Publish as a blog instead of a regular issue.
- What is our niche? Somewhere between ecoinformatics journal and blog.
- We should encourage people to submit blogs to EDI, but look around for thematic ideas for a databits version. Retain the option of a formal issue centered on a particular activity.
- MOB suggested we rotate the editors. Eda volunteered to be editor. She is concerned about losing the LTER Databits terminology and resource. It's a way of maintaining our identity.

## Call to NSF

NSF Questions from LTER IMC:

1. Funding timeline for NCO & EDI?
2. Is NSF planning a new publication reporting process?
3. Renewal RFP timeline?
4. How will site IM guidelines be used?

Peter McCartney VTC

- Introduce 5 new information managers.
- How can we express support for EDI & NCO?
- Role of EDI and similar data repositories is a high-level issue at NSF.
- Need a smooth and unambiguous accountability process. This could be handled by good documentation. E.g. a list of datasets with DOIs. Demonstrate progress by incremental changes.
- Clarify what is under review. List of datasets could be used in reports and proposals.
- Still some technical issues (e.g. with DOIs) to be solved.
- Upcoming changes in annual reports (e.g. using DOIs)?
- Ideally there should be a linkage between dataset DOI, NSF grant number, and publication DOI.
- Updates on RFP timeline for LTER renewals?
- NSF must allow at least 90 days between RFP and submission deadline.
- Data Management Plans are important in site visits and will be a part of the review process.
- Moving back to use of IM guidelines. Needs to be a living document.
- Recent IMC working group updated the site IM guidelines. Still not clear to EB how these will be used.
- The guidelines must be endorsed by the scientists as well as the IMs.
- Current discussion at NSF about how to support the LTER ASM meeting.
- NSF is moving away from funding standing meetings. Focus on outcomes and products that come from a productive meeting.
- Increase opportunities for participation by data managers, statisticians, scientists, etc.
- Peter will be at ESA this year.

Discussion

- NSF will apparently run with the site IM guidelines. Wade will put on agenda for EB.
- Dataset DOIs by themselves are a reductionist measure of success.
- Data citations may be an issue where there are page limits.
- Triad between datasets, funding, and publications
- What is the best way to link a publication to a dataset?
- DataONE is partnering with DataCite for citation solutions. DataCite uses an XML specification as well as DOI.
- DataONE citation does not include the DOI. Chicken & egg problem.
- How can we get support to continue this meeting? A supplement to EDI and NCO is a possibility.
- Next ASM will be at Asilomar (Monterey CA).

## **Working Group Updates**

### **Information Management System Guidelines – Kristin Vanderbilt**

- Work Completed with creation of a formal document

### **WiReD - Brian Herndon**

- IM website. Currently in Drupal 6. Move to Drupal 7? Or move to WordPress?
- What are costs & benefits of moving to WordPress?
- What do we want this website to do?
- What content should go to EDI, LTER general website, archive?
- LTER document archive is incomplete for IM documents. Could IM documents be stored here?
- NCO has made it clear that they're not interested in maintaining a document library. These historic documents are important to us as a community and should be maintained. Our current IM meeting notes are stored in about 4 different places.
- IMC use Google Drive for active collaboration, but we need to have a place to put final products (like reports, notes, etc.)
- Current NCO website is being revamped by 3<sup>rd</sup> party in WordPress. One of three vendors was willing to move information from Drupal to WordPress.
- WordPress is also PHP/MySQL.
- The major task will be sifting the wheat from the chaff. Not discarding, but moving to lower levels in menus, etc.
- CMS is good for managing information but not for archiving.
- Another strategy would be to archive the current website and move items needed to new website.

### **LTER Sites' Website Guidelines - Mary Martin & Marty Downs**

- Mary and Marty have made a first pass at the 2005 document. The WG will meet to discuss these changes.
- Marty has created a survey to determine how people are using websites.
- NSF thinking has changed about local data catalogs since the original document, so we need to keep these as best practices and guidelines for systems that identify the purpose and function.

### **PASTA EML Congruence Checks (ECC) - Margaret O'Brien**

- Active since April 2017. Checker is gatekeeper to PASTA.
- Only integrity checks prevent uploading
- Currently 36 checks.
- New checks are more complex (i.e., datetime).
- They will meet in an afternoon breakout.



## **Afternoon Breakout Group Reports**

### **Terms of Reference (ToR) – led by Don Henshaw**

- Should NCO or EDI have ex-officio representation on IM-Exec?
- Should IMC have presence on the EDI advisory committee?
- EDI should select the person. As sites select their own advisory committees.
- Are IMs required to attend annual meetings? Sites should be encouraged to come.
- What will be the fate of IMC and IM-Exec meetings?
- IM-Exec might pursue funding for the annual IMC meeting. Dave Garrison was not encouraging.
- IM-Exec could also look for cost-effective venues.
- Sites could also contribute if they thought it was important.
- NSF has emphasized that meetings need deliverables to be funded.
- No extra cost for today's meeting as part of ESIP meeting.
- Real cost of this meeting includes our time.
- Expectations for maintaining working groups? Annual reports.
- IM-Exec terms? Recommend 3 years. EB terms are 3 years.
- Reduction in size of IM-Exec last year included ability to ask for help. Emery—report. Jason—meeting logistics. John—travel.

### **PASTA ECC new checks – led by Margaret O'Brien**

- Date-time formats. See chart of all format strings currently in PASTA prepared by Sven.
- New checksum check.
- Schedule for rolling out new checks. Relatively quick turnaround. Every 6 months? Test on dev server.
- Some checks are for enabling better reporting.
- New version of EML by end of year?
- EML is in Github. See issues there.
- Currently no EML field to indicate a project is completed or ongoing. Closest fit is maintenance field.

### **Visioning for IM – led by John Porter**

- Common tools, scalability, crossing disciplines.
- Education for users, each other.
- How much work would it take to fully annotate a dataset for machine use?
- Could crowd sourcing play a role?
- Current standardizations: DEIMS, repositories using EML, etc.
- An out-of-the-box IM system?
- Achieving agreement is one of the greatest challenges.
- Arctic Data Center is developing a web-based form for creating EML (based on Metacat framework).
- Compare ROpenSci community efforts.

## **New LTER Site IM's present their data management plans**

### **Beaufort Sea Lagoon Ecosystems (BLE) – Tim Whiteaker**

- Lagoon ecosystems along north coast of Alaska.
- Completely covered with ice in winter. Large input of fresh water in spring. Generally ice-free in summer.
- Freshwater inflows, coastal erosion, ice scour, ocean mixing, climate change.
- Sample water columns. Subsurface moorings. USGS stream gages. Climate stations. Camera towers.
- Use modeling esp. for winter processes.
- Looking for IM building blocks. Start simple.
- Project starts on 1 Aug 2017. Data collection starts Aug 2018. First dataset in 2019.
- PIs will handle QA/QC and local data management.
- IM will handle EML, data submission, website. Hire RA next year.
- Lots of data. Simulation modeling, camera imagery, underwater video. Maybe 50T/year.
- Data formats: CSV, netCDF, SHP?
- How to gather metadata from PIs?
- EML generation: Excel template, GCE toolbox, Morpho, R?
- How to organize data files?
- Website: static HTML?
- Integration with PASTA API: no local catalog.

### **Northern Gulf of Alaska (NGA) – Rob Bochenek**

- Project starts 1 Oct 2017.
- Axiom is a small company that develops IM and CI technology for environmental, biological, and geo-scientific data.
- Leverage applications, systems, and hardware across partners.
- Goal: reach critical mass.
- Machine-produced data is reasonably standard (sensors, models, GIS).
- Human-produced data are more complex.
- Ontological database serves as broker to tie components together.
- Curation & publication path to NCI-DataOne.
- Server-side R and Python numeric workflows (Jupyter)
- Numerical workflows.
- Use Jupyter notebooks in data processing pathway.
- Issues: ISO -> EML conversion, getting data packages into PASTA.
- Pathway to DataONE exists. Is that sufficient?
- Different NSF program officers have different requirements: PASTA, Arctic Data Center, BCO-DMO.

## **Northeast U.S. Shelf (NES) Stace Beaulieu (No archived presentation)**

- Understand how planktonic food webs change through time and space in response to changes in physical environment.
- Focal area extends south from Cape Cod. Larger area extends from North Carolina to Nova Scotia.
- Eastern boundary is OOI Pioneer Array.
- Several high-volume datasets: imagery, model output.
- Use Github as repository for workflows.
- Data in PASTA. Metadata in DataONE, BCO-DMO, NOAA NEIS.
- Metagenomic data in other databases such as Genbank. How to indicate availability?
- Data inputs: automated sensors, technicians, researchers, GIS & remote sensing.
- BCO-DMO is based on Drupal.
- Project starts 1 Sep 2017.
- Need to make a choice of local IM system.
- LTER network has lost its 2 Drupal champions.

## **Wrap-up and Action Items**

### **Wrap-up**

Notes should be loaded to Figshare for ESIP meeting. ESIP expects us to share our presentations.

Meeting report/annual report to EB are required products from this meeting.

### **Action items:**

Revising the ToR

Databits will be published

IMEXEC will be formalized about announcing meetings by posting agenda a week in advance

### **Adhoc groups:**

History of LTER IM book - Eda; will meet Wednesday Lunch

EML and cross-referencing pubs and dbs – Margaret

DIEMS has poster at science at art (Wed 7-9pm)

IMC dinner tonight at Irish Lion Pub across from Hyatt. Outside at 7 pm. Pay individually

ECC Tuesday dinner at Anatolia

## **Supporting Documents**

## Detailed Agenda

Agenda 2017 July 24 LTER Information Management Committee (IMC), co-located with ESIP version 7/24 5pm

Time	Oak Room in IU Memorial Union building	Persons leading	Notes here on the right are not necessarily lined up with a time schedule.
8:00 AM	open the meeting, agenda, logistics	Gastil, Downing	Assign note-takers and facilitators to sessions
8:10 AM to ...	<p>LTER-NCO discussion</p> <p>Updates from NCO Introduce Julien</p> <p>Questions from IMs or IMC for NCO</p>	Mark Sch, Julien	<p>NCO outline topics</p> <p>status of network databases</p> <ul style="list-style-type: none"> <li>• BibDB</li> <li>• PersDB &amp; SiteDB (archived, frozen, RFC period ended, next?)</li> <li>• ClimHyDB ... or is that EDI?</li> </ul> <p>whole-LTER website (not im.lternet)</p> <p>Status:</p> <ul style="list-style-type: none"> <li>• Chose an Web Design firm to contract, named NDIC</li> <li>• See June 2017 Water Cooler presentation</li> <li>• Content is migrating now. Frozen July 15.</li> </ul> <p>What involvement does NCO need from sites, thru site IMs?</p> <ul style="list-style-type: none"> <li>• recent request for input on logo</li> <li>• recent survey (not just web; communications too)</li> <li>• Mary Martin will update on this in her WG update.</li> </ul> <p>status of IM involvement in data synth WG</p> <ul style="list-style-type: none"> <li>• Mark Sch (and/or Julien) with Wade, to confer, outcome from April meeting.</li> <li>• Involvement of site IMs?</li> </ul> <p>DataBits, if it were to resume,</p> <ul style="list-style-type: none"> <li>• option: blog entries in larger site of NCO or EDI with just DataBits tag</li> <li>• NCO not offering to host and maintain a separate drupal or wp install just for DataBits but willing to receive tagged entries in existing blog.</li> <li>• Wider distribution / chance encounters by non-IMs if part of larger blog</li> </ul> <p>Migration of im.lternet.edu</p> <ul style="list-style-type: none"> <li>• WiReD working group</li> <li>• Some current content will be adopted by EDI</li> <li>• will/or not be migrated to new Drupal versions? By NCO?</li> </ul>

... to 9:20 AM	<p>LTER-EDI discussion</p> <p>Questions to ask EDI &amp; EDI Questions for IMC</p>	Corinna, Margaret, Kristin, Duane, Colin	<ol style="list-style-type: none"> <li>1. from Suzanne: <ol style="list-style-type: none"> <li>a. EDI - the data citation fmt saying EDI not LTER <ul style="list-style-type: none"> <li>Response from EDI: <ul style="list-style-type: none"> <li>Using ESIP citation guidelines</li> <li>Recommend Site Name included in dataset title</li> </ul> </li> </ul> </li> <li>b. EDI advisory group: how to bring up proj/issues? (ie. a NISAC-like advisory committee)</li> <li>c. new congruency checks (ie checksum, intelRights)</li> </ol> </li> <li>2. from Margaret: <ol style="list-style-type: none"> <li>a. The conversation could take the form of 'here is what EDI is planning; does this fit with the IMC's plans?'</li> <li>b. particularly, we are thinking about things like databits. EDI has a newsletter, but some components could be left off if they overlap with DataBits content.</li> <li>C. Units EDI will handle. There will be an RFC from EDI.</li> <li>D. Vocab plan TBD. EDI will discuss with J.Porter this week. Possible EDI RFC.</li> </ol> </li> <li>3. from Corinna: <ol style="list-style-type: none"> <li>a. Report from the LTER, EDI, NCO, DataONE workshop in April. <ul style="list-style-type: none"> <li>EDI and NCO collaborative approaches to updating databases (request for comments - siteDB already done, next climDB?)</li> </ul> </li> <li>c. We like your suggestion of how IMs can provide input to EDI</li> <li>d. Report from EcoCom design pattern workshop (upcoming VTC after ESIP and Margaret's upcoming blog post on the EDI website) Suzanne Remillard and Hope Humphries participated in that workshop and could report.</li> <li>e. Discuss priorities for next Data Package Design Pattern workshop</li> <li>f. Report on new congruence checker rule implementations</li> <li>g. Discuss in person training workshop (planned for fall 2017)</li> </ol> </li> </ol>
9:20 - 9:30 AM	speed-talk 30 second advertisement of ESIP Sessions being done by IMC and EDI people		N sites x 1 minute (30 sec setup + 30 sec ad) Skipped due to time over-run.

9:30 AM	short break		
9:45 - 10:45 AM	NSF call with Peter McCartney, including pre-discussion and post-discussion	facilitated by Wade	Is NSF planning a new way of reporting pubs for annual reports using DOIs that would cross reference funding codes?
10:45	Group Photo		Courtyard near Oak Room
10:50	short break		
			WG Updates from WiReD () speaker: Brian H *ECC ('checker') speaker: Margaret O (was already part of EDI section) Site Website Guidelines speaker: Mary M
	WG updates ( 2* x 5 min each = 10 min total) Plan for next year's WGs	CLOSED to non-LTER people	Voting via Survey Monkey. 1 vote per site. Anonymous. Need 2/3 sites for quorum.  See candidate statements on im.lternet.edu.
11:00 - noon	Business Meeting ... and voting	all other times are OPEN	IMExec 3 year term, 2year term (decided 3-year) DataBits Editor: Eda, Assistant Editor: 2 indicated interest
12:00	lunch one hour		
1 pm - 1:05	Lightning Talks 2 minutes each		J. Porter, W.Sheldon, L.Kui & M.O'Brien
1:05 - 2:00	Intro topics then split into small groups  Option A: ToR updates Option B: Vision for IM Option C: PASTA ECC new checks	A: led by Don, Eda  B: led by JP  C: led by Margaret	A: outside in courtyard ToR - should IM Exec terms be 2 years or 3. How aligns with EDI and NCO grants ending 2 years from now?  B: outdoors, downstairs  C: in Oak Room
2:00 PM	short break		If report-back has slides, load on macbook during break please.
2:55 - 3:55 pm	Break-out report-backs		
3:55 PM	short break		

4:00 pm - 5 pm	<p>1. Stace, Rob, Tim, new-site IMs present their Data Mgmt Plan and/or IM System (15 minutes each)</p> <p>2. Wrap up. Action Items summary. Announce any newly scheduled ad hoc meetings during ESIP days.</p> <p>3. Remind/update logistics for dinner (5 min)</p>	<p>1. Stace, Rob, Tim,</p> <p>2. Gastil (wrap-up)</p> <p>3. Jason</p>	
7:00 PM	dinner at The Irish Lion	Downing	Include celebration of Mark Schildhauer's retirement.



## **IMC Annual Meeting Overview Slides**

# 2017 LTER IMC @ ESIP

**Coherent as a Team while Open to wider Community**



# Agenda Overview

- IMC-NCO
- IMC-EDI
- Commercial break - Ads for ESIP sessions
- IMC-NSF
- Photo op
- WG Updates & Business Meeting \*
- Lunch
- Lightning ⚡ Talks
- Break-outs

- Break-out report-backs
- New Site IMS presentations
- Wrap-up
- Dinner at The Irish Lion



# Logistics

Note-taker volunteers each section of agenda

Scout for photo location VERY NEAR here. Lawn?

Breaks and lunch are short



Raise topics today

More depth later this week



## Use Application Programming Interfaces of Data Repositories to Create Local Data Catalogs

Duane Costa • Stevan Earl • Gastil Gastil-Buhl • John Porter



## Tools and Strategies for End-to-End Sensor Data Management

Matthew Bartos • Mike Botts • Mike Daniels • Wade Sheldon



## Networking Break



## Developing an Information Management Code Repository

Colin Smith • Kristin Vanderbilt



## Sustainable Data Management, Return on Investment

Margaret O'Brien • Anne Wilson



## Networking Break



## Create EML Using R and Share the Script via the Information Management Code Repository

Corinna Gries



## Research as Art

ESRI

Examples - See Sched online

# Wh-wh-which Website WG??!

- Whole-LTER website
  - [www.lternet.edu](http://www.lternet.edu)
  - NCO, consulting with Guidelines WG
  - Marty
- Guidelines for LTER sites' local websites
  - *i.e.* <http://bnz.lternet.edu>, [knz.lternet.edu](http://knz.lternet.edu), ...
  - Guidelines WG
  - Mary & Marty
- The IMC's own website
  - <http://im.lternet.edu/>
  - WiReD WG
  - Brian



Interface between

# LTER - NCO

Updates, Q&A



status of network databases

- BibDB
- PersDB & SiteDB (archived, frozen, RFC period ended, next?)
- ClimHyDB ... or is that EDI?

whole-LTER website (not im.lter.net)

Status:

- Chose an Web Design firm to contract, named NDIC
- See June 2017 Water Cooler presentation
- Content is migrating now. Frozen July 15.

What involvement does NCO need from sites, thru site IMs?

- recent request for input on logo
- recent survey (not just web; communications too)
- Mary Martin will update on this in her WG update.

status of IM involvement in data synth WG

- Mark Sch (and/or Julien) with Wade, to confer, outcome from April meeting.
- Involvement of site IMs?

DataBits, if it were to resume,

- option: blog entries in larger site of NCO or EDI with just DataBits tag
- NCO not offering to host and maintain a separate drupal or wp install just for DataBits but willing to receive tagged entries in existing blog.
- Wider distribution / chance encounters by non-IMs if part of larger blog

Migration of im.lter.net.edu

- WiReD working group
- Some current content will be adopted by EDI





Ongoing dialog

Ad-hoc discussions here  
this week

Monthly IMC Water  
Cooler vtc online



# NSF Call

Questions to ask:

- 1 Funding timeline for NCO, EDI?
- 2 Is NSF planning new publication reporting process for proposals?
- 3 Renewal RFP timeline?
- 4 How will site IM system guidelines be used?

Post-Discussion points:

1

2

# Working Group Updates

- Site Guidelines
  - Kristen thru IMS Guidelines, now Mary & Marty for Site Website Guidelines
- WiReD
  - Brian
- EML Congruence Checks
  - Margaret

# IMC Business Meeting

Closed session

Candidate Statements (see speaker's notes)

Any other issues need votes?

DataBits editor & assistant?

ToR is a break-out later. Can RFC it after meeting.

# Lightning Talks

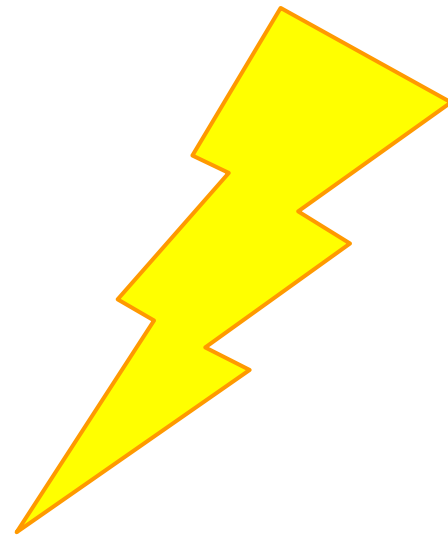
John Porter      R, EML and populating <taxonomicCoverage>

Li Kui & Margaret O'Brien      miniMetabase and R

Andrews (Don or Suzanne)      History or sitebyte (respectively)

Wade Sheldon      EML Packages from the GCE Data Toolbox

[http://gce-lter.marsci.uga.edu/public/file\\_pickup/toolbox\\_demo/EML\\_GCE\\_Toolbox.pdf](http://gce-lter.marsci.uga.edu/public/file_pickup/toolbox_demo/EML_GCE_Toolbox.pdf)



# Break-outs .... And report-backs

## A. ToR Updates

- a. Don, Eda
- b. Note Taker:

## B. IM Vision

- a. Lead by... John Porter
- b. Note taker: John Porter

## C. PASTA EML Congruence Checker new checks

- a. Lead by Margaret.
- b. Note taker:

# New LTER Sites' IM Systems

Stace Beaulieu at [NES LTER](#) Northeast U.S. Shelf

Tim Whiteaker at [BLE LTER](#) Beaufort Lagoon Ecosystem

Rob Bochenek at [NGA LTER](#) Northern Gulf of Alaska

# Wrap-up & Logistics

Announce any new ad-hoc sessions this week.

Any travel reimbursement info to announce?

Need food, shuttle receipts?

Dinner at The Irish Lion



*"All those in favor of saying 'It's a wrap' instead of 'Meeting adjourned' say 'Aye.'"*

# Thank you for attending. Enjoy the ESIP week!




## **Lightning Talk (1) - Taxonomic Coverage – John Porter**

# Taxonomic Coverage

- Only about 600 of the ~6,000 EML-documented datasets include a taxonomic coverage
  - ▣ Taxonomic coverages may be as simple as a single species name, or an entire taxonomic tree
- There are now tools that can help translate simple species lists into taxonomicCoverage elements
  - ▣ The R EML package – handles formatting
  - ▣ The R Taxize package – handles taxonomic tree
- Why not combine them?

# A Revised `set_taxonomy()` function

- Bryce Mecum at NCEAS has been working on revisions to the R EML package that includes integrating Taxize
- With that revised code, I've been able to write simple R code that:
  - ▣ Reads in a list of taxonomic names
  - ▣ Finds “accepted” names
  - ▣ Provides `taxonomicCoverage` elements including the hierarchy

- 
- The “snippet” can then be integrated into EML documents

```
<taxonomicClassification>
  <taxonRankName>kingdom</taxonRankName>
  <taxonRankValue>Animalia</taxonRankValue>
  <taxonomicClassification>
    <taxonRankName>subkingdom</taxonRankName>
    <taxonRankValue>Bilateria</taxonRankValue>
    <taxonomicClassification>
      <taxonRankName>infrakingdom</taxonRankName>
      <taxonRankValue>Protostomia</taxonRankValue>
      <taxonomicClassification>
        <taxonRankName>superphylum</taxonRankName>
        <taxonRankValue>Ecdysozoa</taxonRankValue>
        <taxonomicClassification>
          <taxonRankName>phylum</taxonRankName>
          <taxonRankValue>Arthropoda</taxonRankValue>
          <taxonomicClassification>
            <taxonRankName>subphylum</taxonRankName>
            <taxonRankValue>Crustacea</taxonRankValue>
            <taxonomicClassification>
              <taxonRankName>class</taxonRankName>
              <taxonRankValue>Malacostraca</taxonRankValue>
              <taxonomicClassification>
                <taxonRankName>subclass</taxonRankName>
                <taxonRankValue>Eumalacostraca</taxonRankValue>
                <taxonomicClassification>
                  <taxonRankName>superorder</taxonRankName>
                  <taxonRankValue>Eucarida</taxonRankValue>
                  <taxonomicClassification>
                    <taxonRankName>order</taxonRankName>
                    <taxonRankValue>Decapoda</taxonRankValue>
                    <taxonomicClassification>
                      <taxonRankName>suborder</taxonRankName>
                      <taxonRankValue>Pleocyemata</taxonRankValue>
                      <taxonomicClassification>
                        <taxonRankName>infraorder</taxonRankName>
                        <taxonRankValue>Brachyura</taxonRankValue>
                        <taxonomicClassification>
                          <taxonRankName>superfamily</taxonRankName>
                          <taxonRankValue>Ocypodoidea</taxonRankValue>
                          <taxonomicClassification>
                            <taxonRankName>family</taxonRankName>
                            <taxonRankValue>Ocypodidae</taxonRankValue>
                            <taxonomicClassification>
                              <taxonRankName>genus</taxonRankName>
                              <taxonRankValue>Uca</taxonRankValue>
                              <taxonomicClassification>
                                <taxonRankName>species</taxonRankName>
                                <taxonRankValue>Uca pugnax</taxonRankValue>
                                </taxonomicClassification>
                              </taxonomicClassification>
                            </taxonomicClassification>
                          </taxonomicClassification>
                        </taxonomicClassification>
                      </taxonomicClassification>
                    </taxonomicClassification>
                  </taxonomicClassification>
                </taxonomicClassification>
              </taxonomicClassification>
            </taxonomicClassification>
          </taxonomicClassification>
        </taxonomicClassification>
      </taxonomicClassification>
    </taxonomicClassification>
  </taxonomicClassification>
</taxonomicClassification>
```

Read-Only] - Microsoft Excel

	A	B	C	D	E	F	G	H	I	J	K	L	M	N	O
	Scope	Identifie	Revision	Title	beginDate	endDate	durationYears	entities	attributes	keywords	geographi	taxonomi	taxonomic	Species	
1	knb-lter-and	2719	6	Invertebrates of the Andrews Experime	6/1/1971	3/11/2002	30.7761807	1	16	7	2	5012	2513		
2	knb-lter-and	2739	7	Spatial and temporal distribution and a	1/2/1994	10/15/2008	14.78439425	2	12	3	261	3274	2188		
3	knb-lter-and	2720	8	Vascular plant list on the Andrews Expe	1/1/1958	1/1/1979	20.99931554	2	38	3	3	1108	666		
4	knb-lter-and	3217	11	Plant succession and biomass dynamics	1/1/1962	7/31/2013	51.57837098	5	109	12	197	547	255		
5	knb-lter-and	4346	6	Aquatic insect sampling in Lookout Cre	6/22/2001	9/20/2001	0.246406571	3	27	4	2	513	241		
6	knb-lter-and	3136	5	Spatial and temporal distribution and a	1/2/1994	1/2/1996	1.998631075	1	9	3	2	315	214		
7	knb-lter-and	2721	6	Bird species list for the Andrews Experi	1/1/1975	1/1/1995	20	1	24	4	2	303	164		
8	knb-lter-and	2727	7	Riparian bryophyte list of the Andrews	7/1/1994	4/1/1995	0.750171116	1	8	5	2	247	149		
9	knb-lter-fce	1159	2	Diatom Species Abundance Data from L	12/9/2006	3/28/2008	1.300479124	1	150	22	47	146	146		
10	knb-lter-and	4041	11	LTER Intersite Fine Litter Decompositio	1/31/1990	6/12/2007	17.36071184	12	211	7	30	298	131		
11	knb-lter-and	4547	5	Epiphytic macrolichens in relation to fo	9/23/1997	9/15/1999	1.976728268	4	44	13	119	208	127		
12	knb-lter-and	4054	7	Plant biomass dynamics following loggi	7/9/1979	8/20/2014	35.1156742	6	67	3	3	321	119		
13	knb-lter-and	2728	7	Epiphyte species list of Watershed 10, A	1/1/1970	1/1/1972	1.998631075	1	13	3	2	180	104		
14	knb-lter-and	3189	10	Stream cross-section profiles in the An	4/14/1978	9/6/2011	33.3963039	6	53	8	5	266	99		
15	knb-lter-sbc	99	1	SBC LTER: Reef: Kelp Forest Community Dynamics: Kelp Forest Data to sup			-1	2	23	8	11	168	84		
16	knb-lter-pie	175	5	Surveys of salt marsh breeding birds us	6/9/2004	7/10/2015	11.08281999	1	17	9	7	166	83		
17	knb-lter-pie	349	1	Surveys of salt marsh wading birds and	5/25/2012	7/15/2014	2.138261465	1	21	10	2	166	83		
18	knb-lter-and	3192	9	Fire history database of the western Ur	1/1/1993	1/1/1996	2.997946612	3	41	3	623	166	73		
19	knb-lter-fce	1108	3	Macrophyte count data collected from l	9/11/2006	9/17/2008	2.01779603	1	69	19	37	58	58		
20	knb-lter-and	2732	7	Mycorrhizal belowground fungi species	6/3/1991	6/30/1994	3.074606434	2	20	3	10	141	56		
21	knb-lter-hfr	222	3	Vegetation Cover in the Clearcut Site at	6/1/2010	7/12/2013	3.112936345	1	12	14	1	101	55		
22	knb-lter-and	2733	6	Lichen abundance and biodiversity alon	1/1/1993	1/1/1993	0	1	11	7	1	81	55		
23	knb-lter-fce	1164	6	Seasonal Electrofishing Data from Rock	11/1/2004	5/5/2014	9.505817932	1	76	28	19	54	54		
24	knb-														
25	knb-														
26	knb-														
27	knb-														

EMLStats.py summarizes elements of documents not available through other sorts of searching (Duration, #entities, #attributes, #keywords, #coverage elements)

## **Lightning Talk (2) - Mini-metabase for generating EML – Li Kui**

# Mini-metabase for generating EML



## Postgres (16 tables)

- Dataset
- Entities
- Personnel
- Attribute
- Keyword

## Word

- Abstract
- Method
- Intellectual rights

## R

- Geographic location
- Temporal range
- Taxon
- Size

R

Read Postgres  
/ Words

Data tables  
and attributes

dataset  
components

EML

## **Lightning Talk (3) - EML Packages from the GCE Data Toolbox**

**Wade Sheldon**



# EML Packages from the GCE Data Toolbox

Wade Sheldon

Georgia Coastal Ecosystems LTER

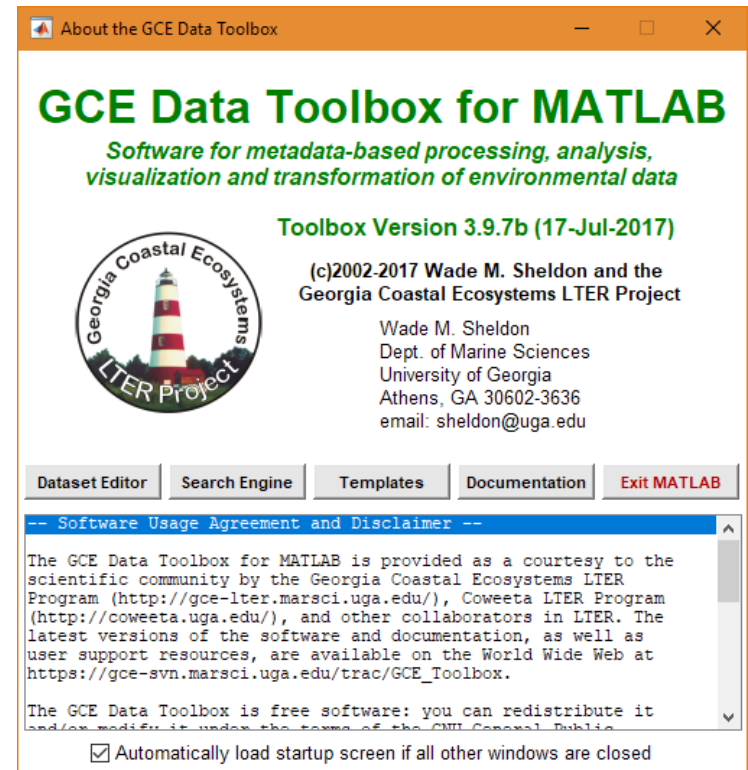
University of Georgia

email: [sheldon@uga.edu](mailto:sheldon@uga.edu)



# Background

- ▶ Generalized MATLAB package for metadata-based data management
- ▶ Documentation, attribute, Q/C rule metadata managed in templates
- ▶ Metadata applied on import to document and Q/C data
- ▶ Ideal for sensor data, but useful for any tabular/SQL data source



# EML Export – Metabase

- ▶ Toolbox can now register new data sets in a Metabase instance
- ▶ Top-level metadata uploaded via JDBC to create ID/Accession
- ▶ Entity files generated and metadata uploaded via JDBC
- ▶ Metabase catalog application/services generate PASTA EML

Real-time climate data from the SINERR/GCE/UGAMI weath...

File Edit Metadata Tools Misc Window Help

**Column List (select to display properties)**

- NESDIS\_ID (none)
- NWSLID (none)
- Date (serial day (base 1/1/0000) - GMT)
- Year (YYYY)
- Month (MM)
- Day (DD)
- Hour (hr)
- Minute (min)
- Temp\_Air (°C)
- Max\_Temp\_Air (°C)
- Time\_Max\_Temp\_Air (hhmm)
- Min\_Temp\_Air (°C)
- Time\_Min\_Temp\_Air (hhmm)
- Humidity (%)
- Baro\_Press (mbar)
- Wind\_Speed (m/s)

Move First  
Move Up  
Move Down  
Move Last  
Preview  
Histogram  
Manual QC  
Add  
Delete  
Restore

Column Name: NESDIS\_ID

Column Units: none

Description: NOAA National Environmental Satellite, Data and Information Service Platform ID

Data Type: alphanumeric string (s)

Variable Type: categorical values (nominal)

Numerical Type: non-numeric (none)

Precision: 0 decimal places

Flag Criteria: Edit



Register Metabase Dataset

Accession: MET-GCEM-1707 ID: 623 Study Type: GCE-III - Monitoring

Investigator: Guy, Rachel K. Theme: Meteorology

Submit Date: 07/22/2017 Project Release: 07/22/2017 Public Release: 07/22/2019

Options: ☒ Register Methods and Study Metadata in Metabase?

Cancel Proceed



Export Dataset Files

Export Path: C:\Temp

Flag Option: Text flag columns (data/calc) Group Column: Month

Entity Name: <new entity> data

Description: Main data table for data set MET-GCEM-1707

Version: 1.0 Date Format: dd-mm-yyyy HH.MM.SS

Metabase: ☒ Register files in the Metabase? ☒ Delete existing Metabase file entries for this entity?

Cancel Proceed

# EML Export – Standalone

- ▶ Toolbox can also create EML packages for PASTA natively
- ▶ Generates complete EML docs with physical and attribute meta
- ▶ Can also generate dataTable EML fragments for adding to EML docs
- ▶ Q/C flags automatically documented as coded text columns
- ▶ Unit dictionary unit mapping or auto custom units with STMML

Real-time climate data from the SINERR/GCE/UGAMI weath...

File Edit Metadata Tools Misc Window Help

Column List (select to display properties)

- NESDIS\_ID (none)
- NWSLID (none)
- Date (serial day (base 1/1/0000) - GMT)
- Year (YYYY)
- Month (MM)
- Day (DD)
- Hour (hr)
- Minute (min)
- Temp\_Air (°C)
- Max\_Temp\_Air (°C)
- Time\_Max\_Temp\_Air (hhmm)
- Min\_Temp\_Air (°C)
- Time\_Min\_Temp\_Air (hhmm)
- Humidity (%)
- Baro\_Press (mbar)
- Wind\_Speed (m/s)

Move First Move Up Move Down Move Last Preview Histogram Manual QC Add Delete Restore

Column Name NESDIS\_ID

Column Units none Convert

Description

NOAA National Environmental Satellite, Data and Information Service Platform ID

Data Type alphanumeric string (s)

Variable Type categorical values (nominal)

Numerical Type non-numeric (none)

Precision 0 decimal places

Flag Criteria Edit



Export EML Dataset

Export Path C:\Users\Wade\Desktop

File Name marshlanding\_met\_20170719.csv Entity Name data

Data URL http://gce-lter.marsci.uga.edu/public/file\_pickup/toolbox\_demo/marshlanding\_met\_20170719.csv

File Format CSV (spreadsheet) Flag Option Text flag columns (data/calc + others)

Header 5-line header (title, column names, units, variable types) ☐ dataTable Only

Package ID knb-lter-gce.999.1 AuthSystem knb ☒ Public Access

Date Format yyyy-mm-dd HH:MM:SS Missing Char NaN ☒ Map Units

Cancel ☒ Close dialog after performing export? Proceed

# More Info

- ▶ GCE Data Toolbox website:

[https://gce-svn.marsci.uga.edu/trac/GCE\\_Toolbox](https://gce-svn.marsci.uga.edu/trac/GCE_Toolbox)

- ▶ Support resources:

[https://gce-svn.marsci.uga.edu/trac/GCE\\_Toolbox/wiki/Support](https://gce-svn.marsci.uga.edu/trac/GCE_Toolbox/wiki/Support)

- ▶ Toolbox is FOSS (but requires MATLAB)

## **Breakout Group (1) – Terms of Reference (ToR) updates**

# LTER Information Management Committee Terms of Reference (ToR)

- Governance procedures have changed since ToR endorsed in 2011
- ToR overview, purpose, IMC membership, voting, elections, working groups, meeting rotation are still fairly consistent
- IMExec membership, Network roles, and budget and expenses have changed

# IMExec membership

- 5 members plus 2 co-Chairs
- 3 year terms
- Ex-officio
  - IM rep to Exec Board (3 year term)
  - LNO Chief Information Officer (James Brunt)
  - LNO Information Manager
  - NISAC rep when discussion warranted
- Co-Chairs ex-officio to Science Council



# Working Groups

- Ad hoc and formal working groups
- Formal status achieved by developing a ToR
- Active groups post roster of membership, roster of actions, file annual report
- Disbanded WGs provide final report
- IMExec assigns a liaison to each WG

# Network Roles

- Elected representative to the EB
  - Wade Sheldon is current rep
- Membership in Network Information System Advisory Committee (NISAC)
  - 4 or 5 members and included an IM co-Chair
  - 3 year terms
  - Committee has been dissolved

# Meetings and Budget

- Annual meetings on 3 year rotation
  - 1) IMC alone, 2) part of larger conference (i.e., ESIP or EIMC, 3) in conjunction with the All-Scientist Meeting (ASM)
- “Sites are required to send a representative”
  - LNO provides funding for IMC, IMExec winter meeting, and other working group meetings

# Discussion / Questions

- Should we officially assign 5 members to IMExec?  
Or, limit the term length?
- Should we consider ex-officio representation on IMExec from NCO or EDI?
- Do we include a representative to the EDI Advisory Committee?
- Are IMs still “required” to attend the annual meeting?
- What is the general fate of IMC and IMExec meetings? Is there a continuing budget?
- What are the expectations for maintaining working groups?

# LTER Information Management Committee Terms of Reference (ToR)

# Should we officially assign 5 members to IMExec?

- YES
- Steven and Jonathan think 5 members works well... harder to coordinate 7 people
- 4 IM Exec members + 1 Chair... if a co-chair is needed, it would come from one of the other 4
- What about EB rep? Can we make that person also on IM Exec with the same 3 year term?

Should we consider ex-officio representation on IMExec from NCO or EDI? Do we include a representative to the EDI Advisory Committee?

- Currently Gastil takes a walk with Marty (NCO)
- How does NCO see their relationship with LTER Information Managers?
- How do we establish a more formal relationship? through ex-officio appointment with IM Exec? we should formalize this in ToR.
- How do EDI and LTER IM Exec communicate? let's formalize this also
- If EDI is offering an advisory board spot to an LTER IM, then we should decide the representation as a group, like we did with NISAC (then, IM Exec approves...)
- Does EDI actually want an LTER IM on their advisory board?

Are IMs still “required” to attend the annual meeting? What is general fate of IMC and IM Exec meetings? Is there a continuing budget?

- we strongly recommend/encourage IMs to attend IMC in person... otherwise remote in.
- but we are going to let go of the in-person IM Exec winter meeting, which historically was all about planning for IMC summer meeting
- IM Exec has monthly VTC meetings
- Re: funding issues
  - There is still funding for ASM....
  - IM Exec should add this as a responsibility --> pursue NSF supplements
  - Also, look for cheap options to meet; are sites willing to cost-share? (e.g., pay for lodging)



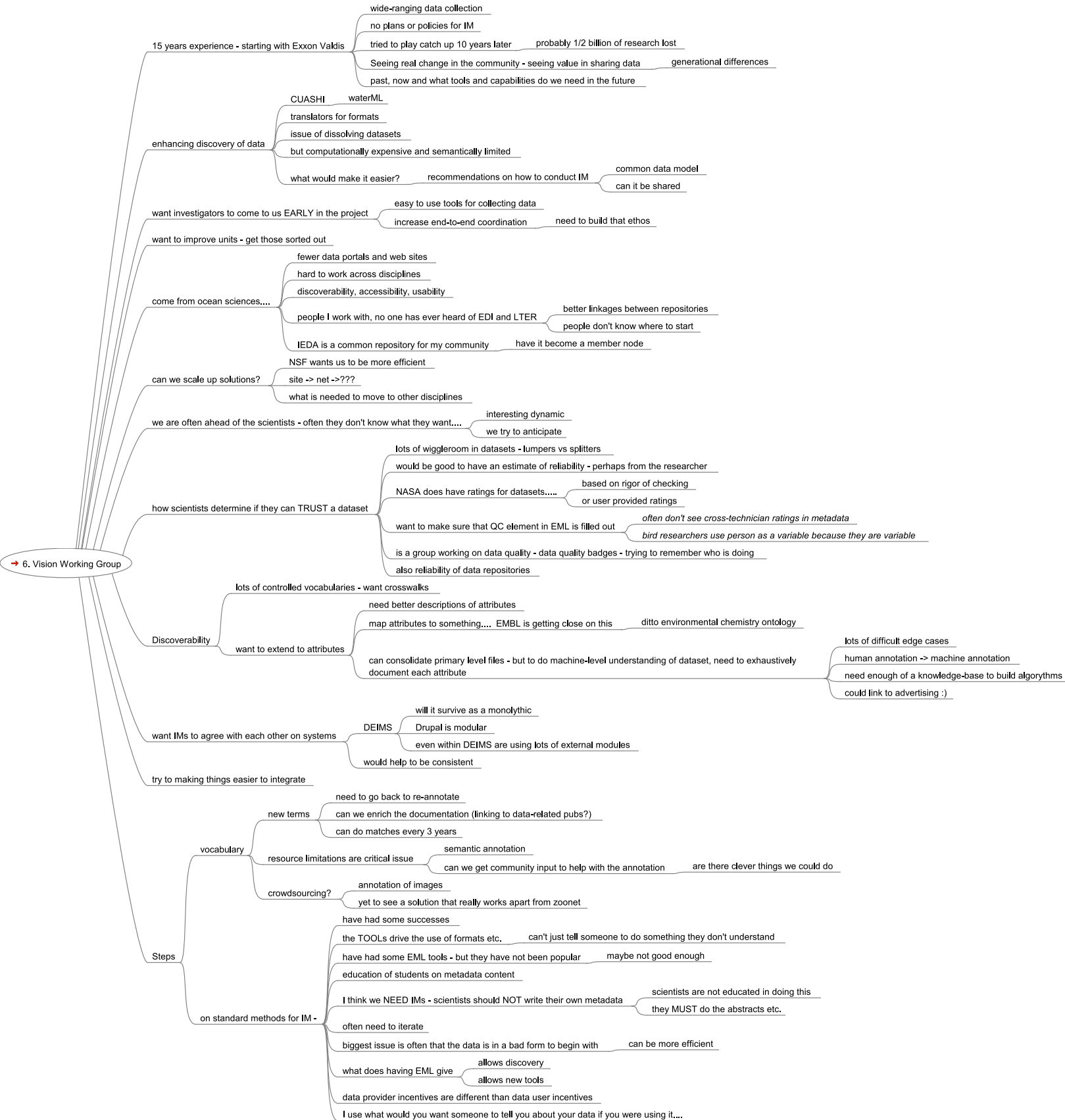
# What are the expectations for maintaining working groups?

- we recommend report outs at annual IMC meeting as well as written report outs of working group duties and current membership on website

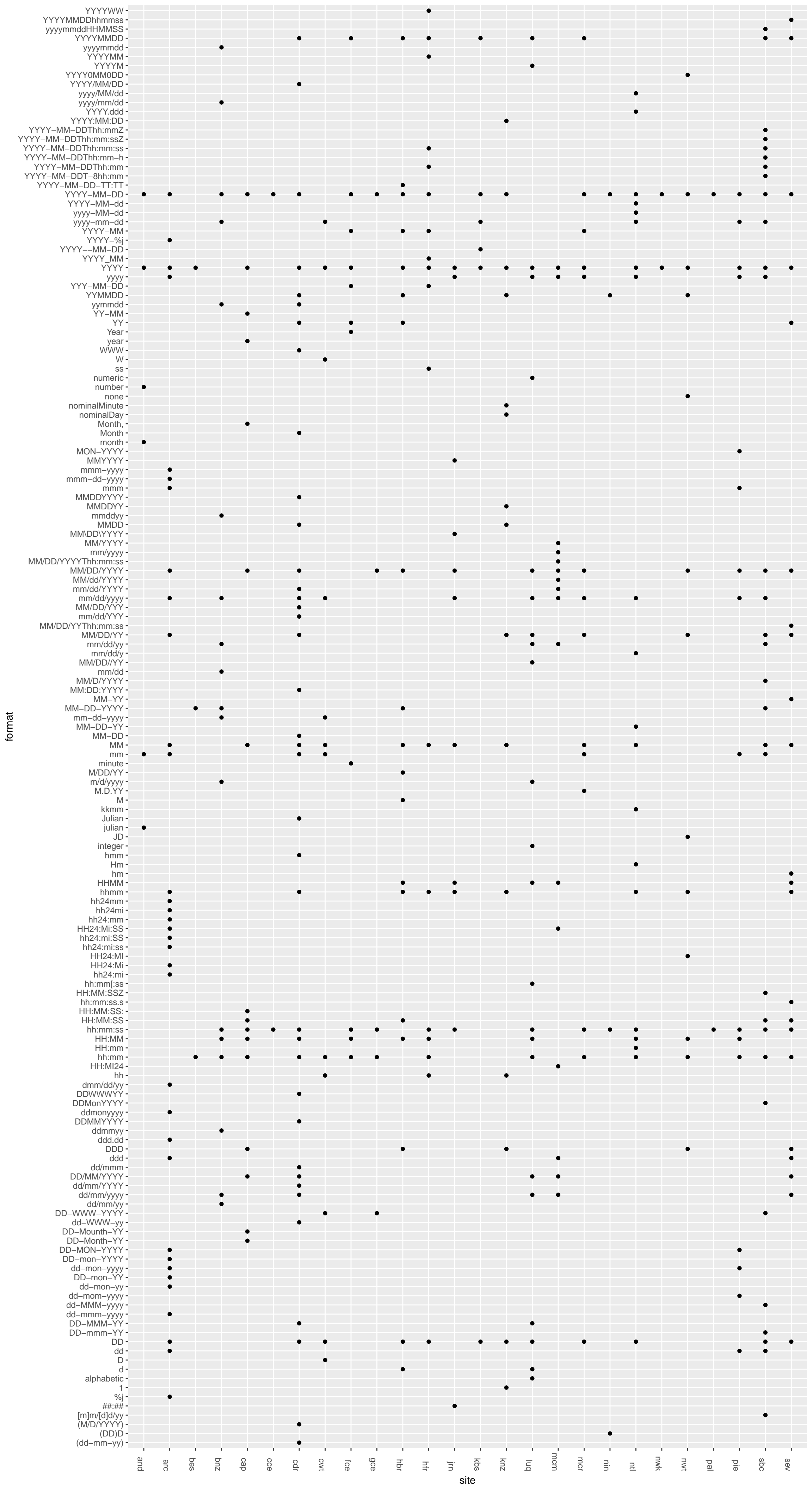
## 2 vs. 3 year terms on IM Exec?

- if we align EB member with IM Exec, then keep 3 year terms
- we recommend 3 year terms... Balance between continuity and allowing more folks to participate

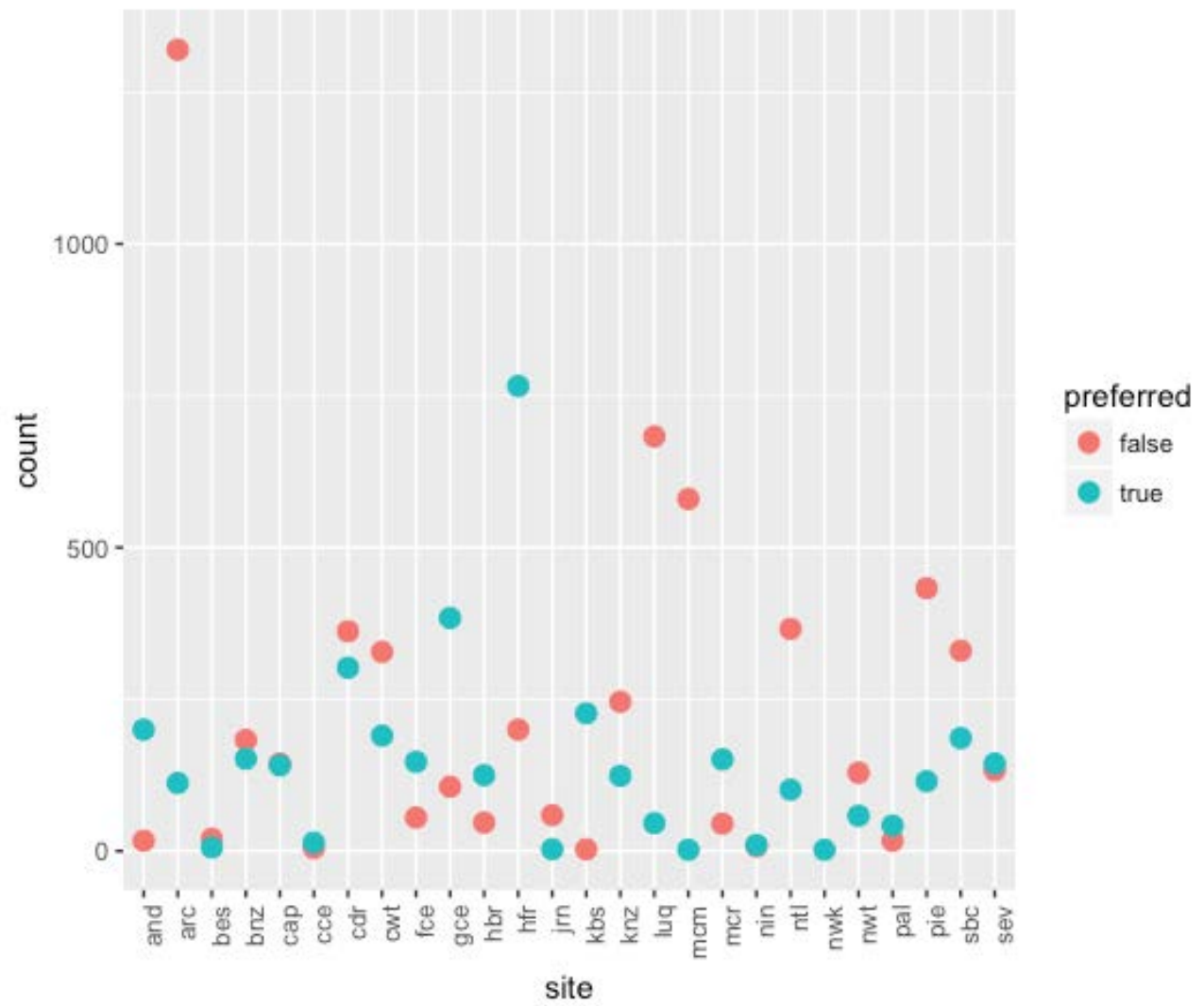
## **Breakout Group (1) – Vision for IM**



## **Breakout Group (1) – PASTA ECC new checks (datetime)**



Preferred vs non preferred date format strings



**New LTER Site IM's present their data management plan  
Beaufort Sea Lagoon Ecosystems (BLE) – Tim Whiteaker**



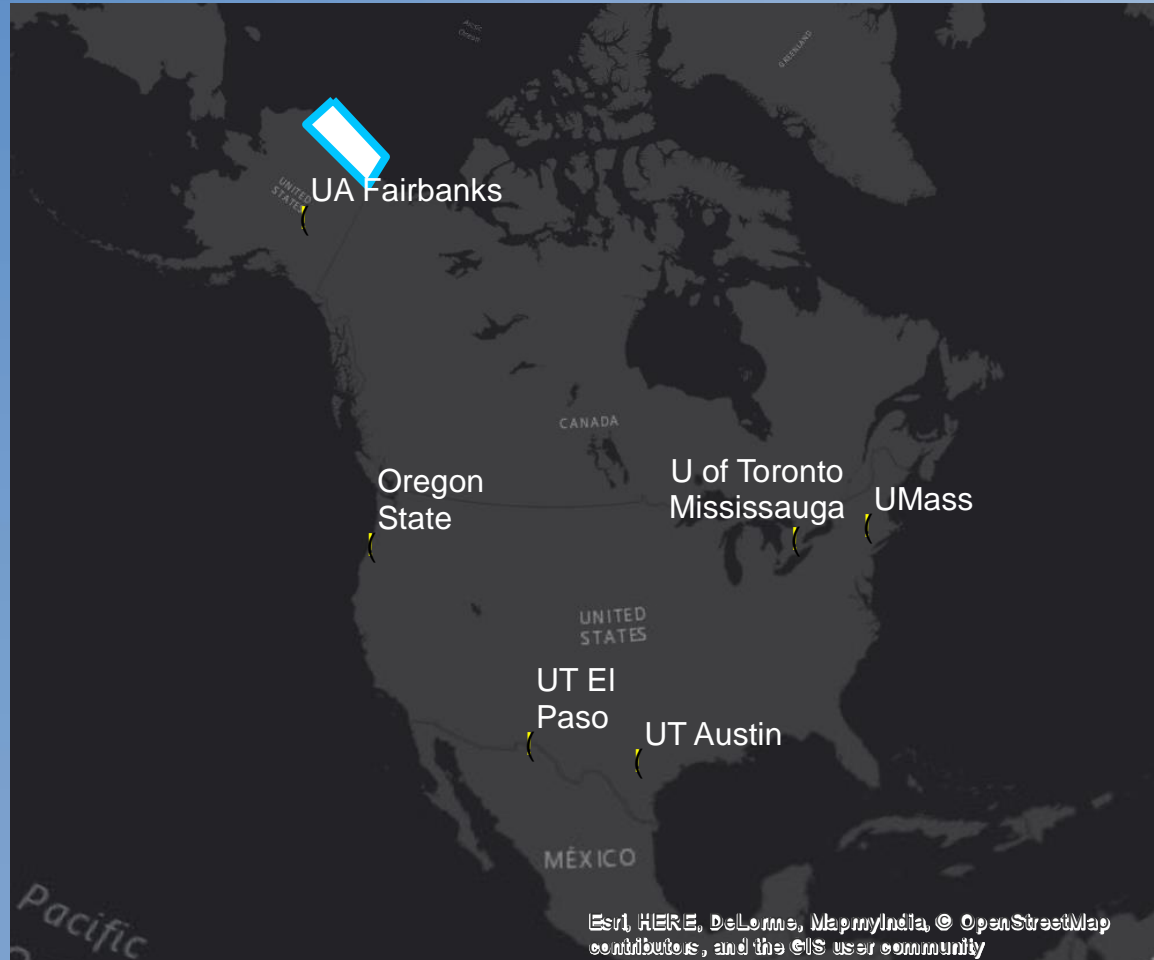
# *Beaufort Sea Lagoon Ecosystems (BLE)*

---

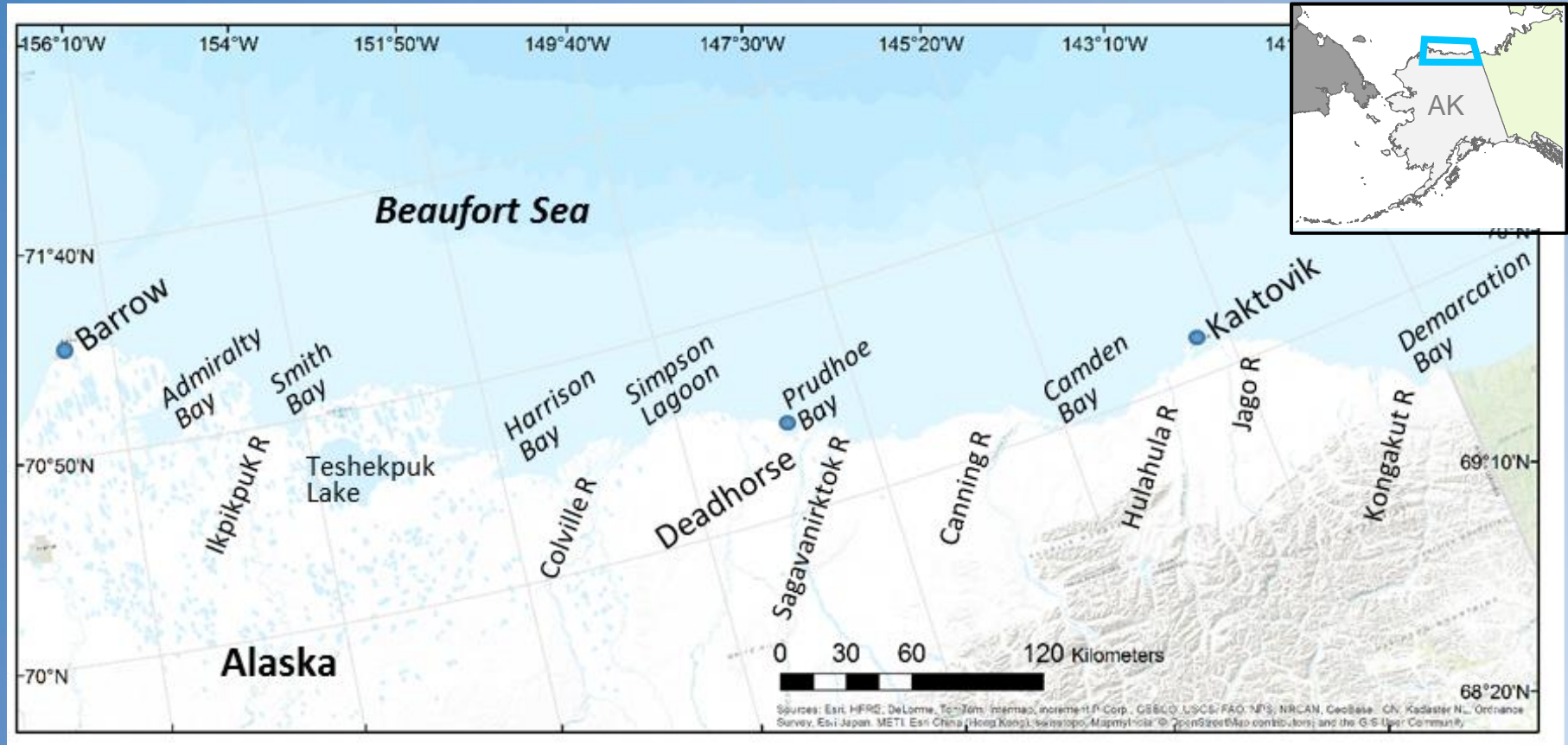


Ken Dunton and Jim McClelland, UT-Austin  
IM – Tim Whiteaker

# A Distributed Team

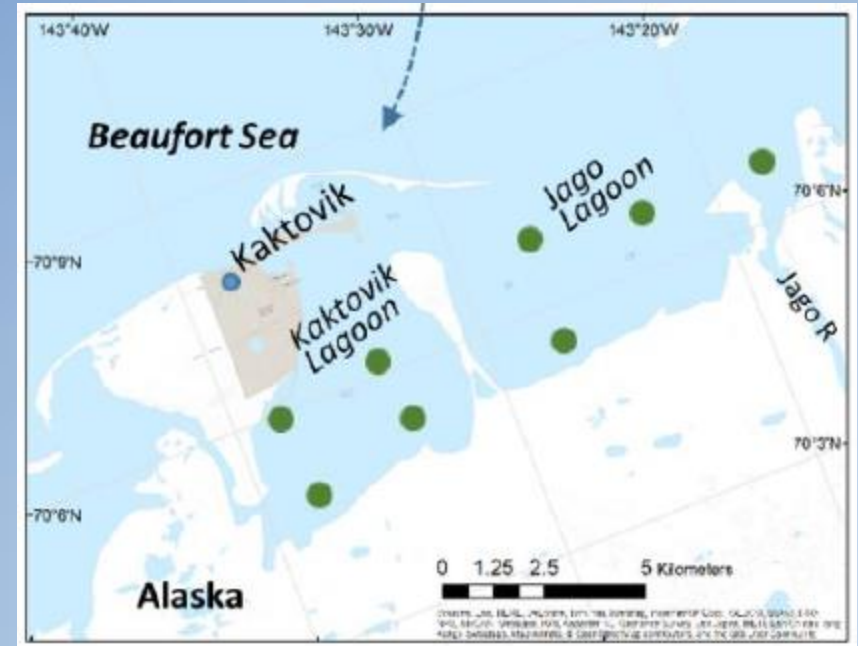
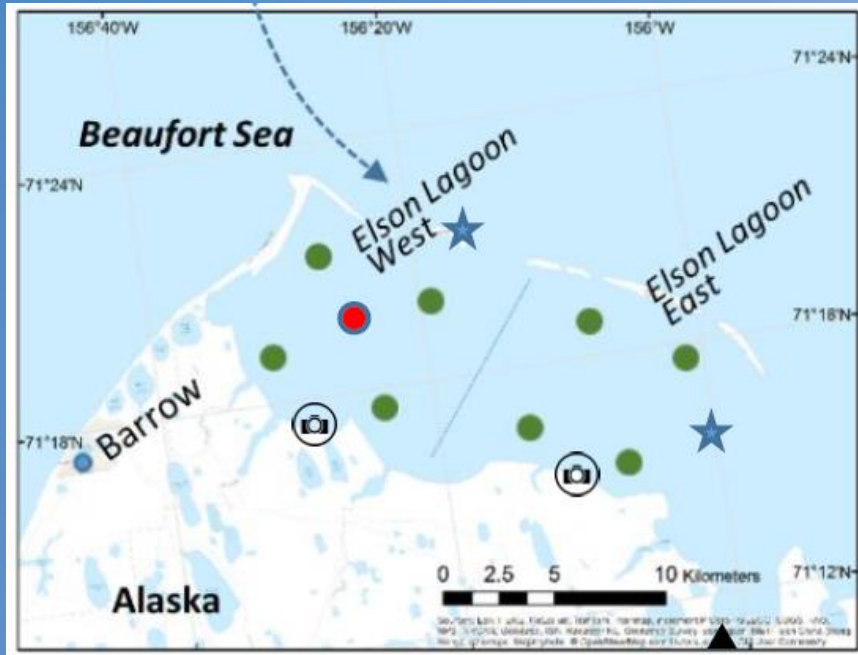


# Targeting Lagoons Along the Beaufort Sea



- Three domains in the Western, Central, and Eastern Beaufort

# Two lagoon systems within each domain

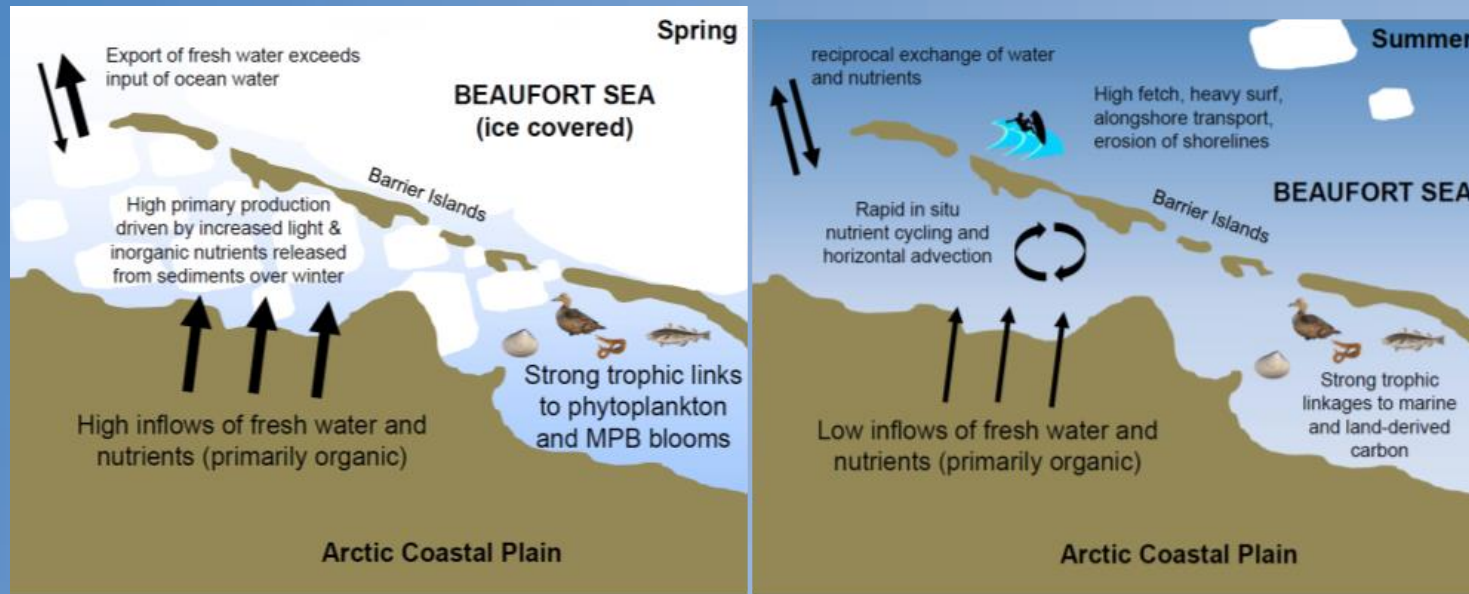




# Ice-covered to Ice-free

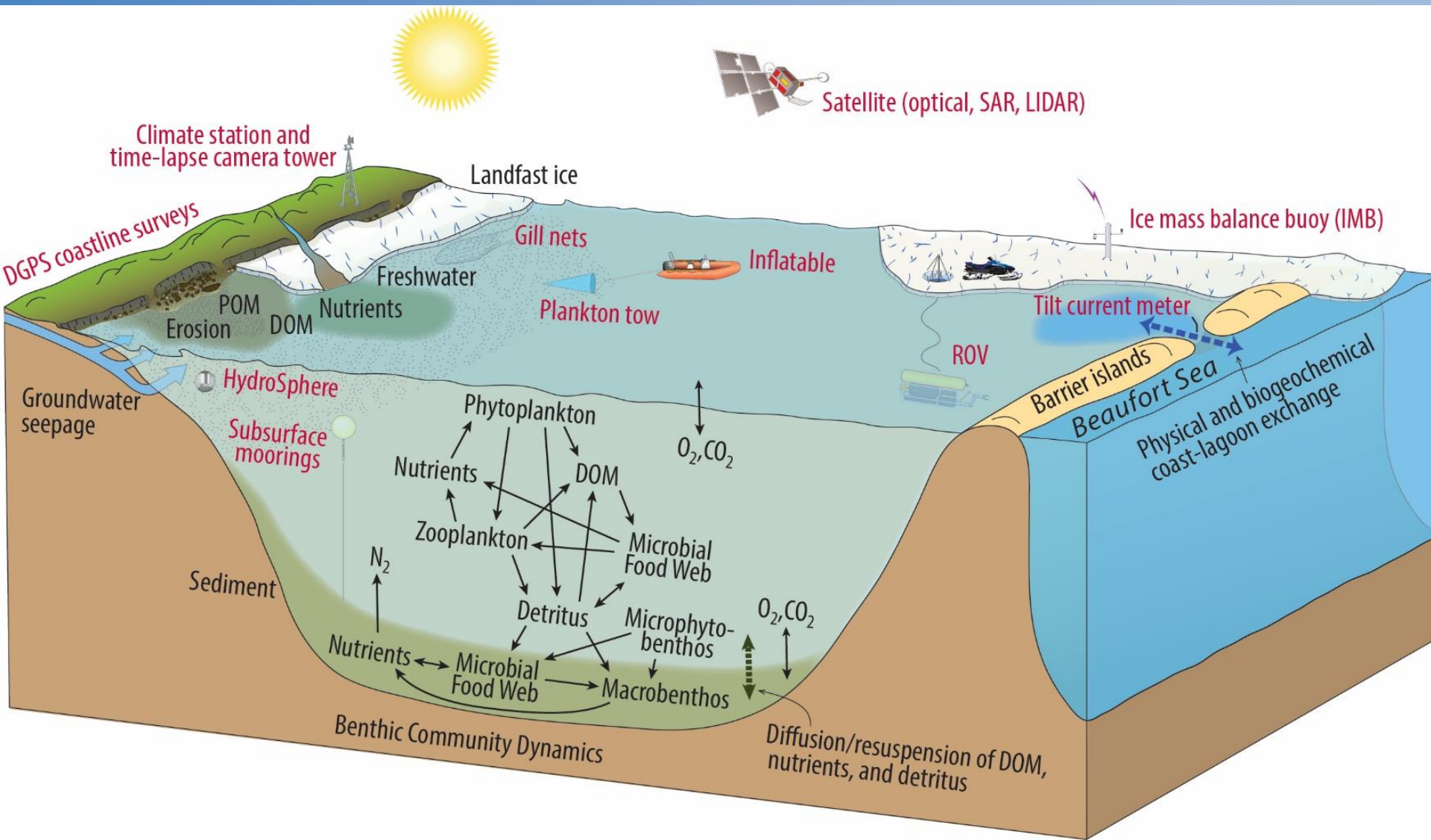


# Major Questions



- How do interactions between freshwater inflows, coastal erosion, ice scour, and ocean mixing influence biogeochemical cycling and biotic community characteristics near the land-sea interface over seasonal to multi-decadal timeframes?
- Do temporal variations play a central role in determining trophic linkages, stability, and resilience of food webs?

# A Coastal Research Nexus in the Arctic





# Information Management



"Playing in the Street" on Flickr by Sharon Drummond



# Information Management

- Data collection starts August 2018
- Pls handle QA and local data mgmt
- Pls submit data for EDI archive to IM
- IM handles
  - EML
  - Data submission
  - Website

# Where To Archive

- Local Archives
  - Model output
  - Images
  - Videos
- Uploaded to EDI
  - Sensor data
  - Sample results
  - Model result summary
  - Image/video analysis results
  - Digitized coastline
- Formats
  - CSV
  - netCDF
  - SHP?

Metadata  
in PASTA?

# Gathering Metadata

- Excel template?
- Maybe Cognito forms a la PAL and CCE
- Maybe ad hoc forms for each PI
  - set up prior to data collection?

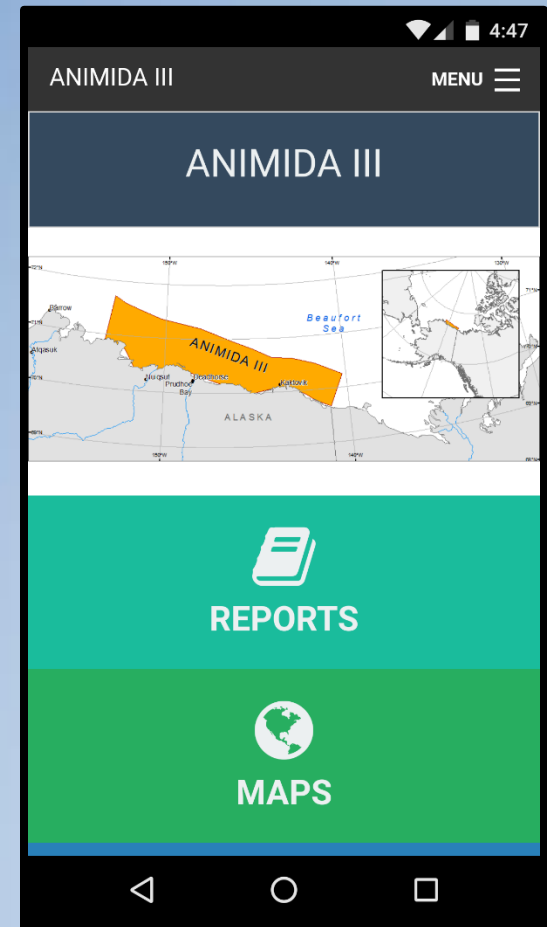
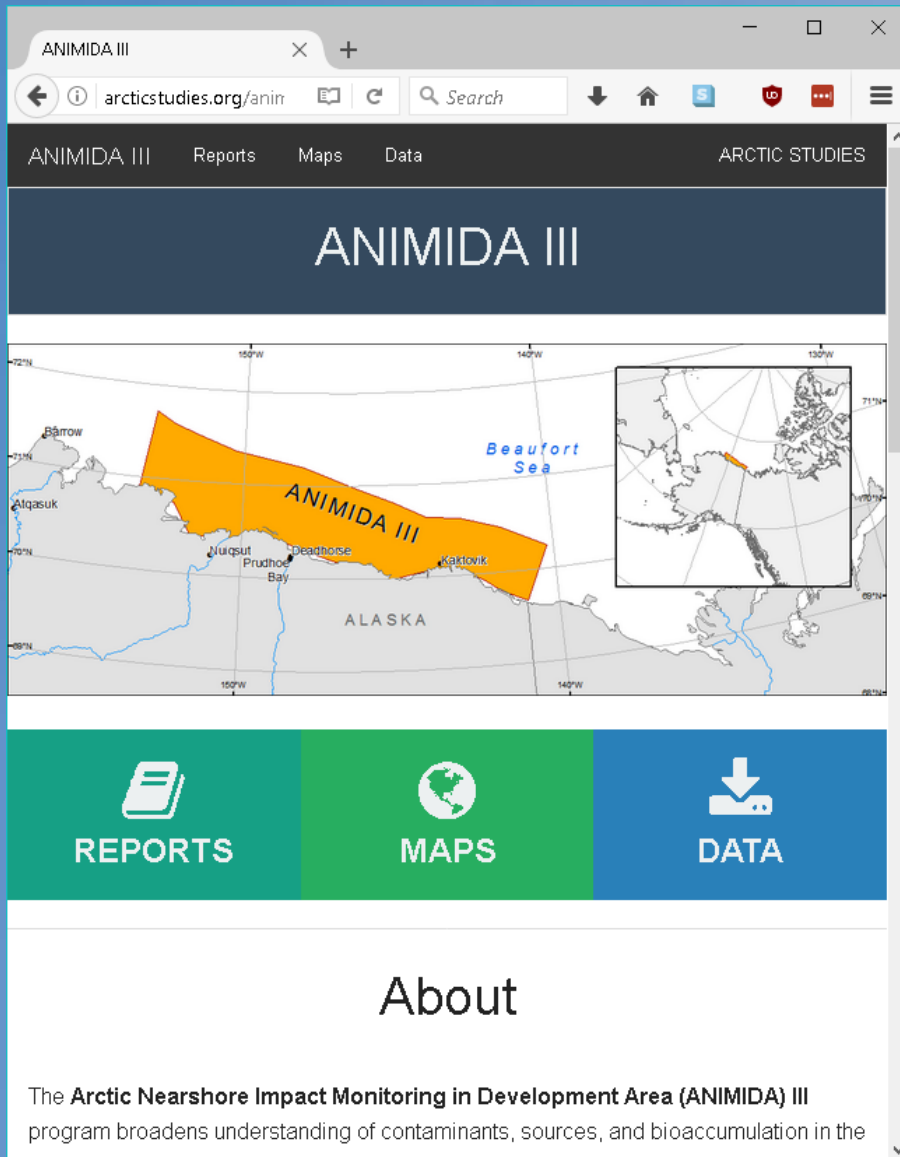
# EML

- Was originally thinking Excel template or GCE Toolbox
- Morpho seems nice if it will have long term support
- Currently thinking R since EDI supports it

# File System

- How do you organize data files?
- Like PAL:
  - PI-1
    - Dataset-1
      - Date-1
      - Date-2
    - Dataset-2
      - Date
  - PI-2
    - Dataset
      - Date

# Website – Static HTML?



# Integration with PASTA API

- No local catalog for me
- Can this be done with static HTML?
  - Access-Control-Allow-Origin: '\*'
- DEIMS and PASTA? Datazoo?

A scenic winter landscape featuring snow-covered mountains in the background, evergreen trees in the midground, and a frozen river or stream in the foreground. The scene is misty and atmospheric. A semi-transparent horizontal band across the middle of the image contains the word "Thanks!" in a bright blue, sans-serif font.

# Thanks!



**New LTER Site IM's present their data management plan**  
**Northern Gulf of Alaska (NGA) – Rob Bochenek**



# Northern Gulf of Alaska LTER



Rob Bochenek

# Summary

- Introduction to Axiom
- Shared Cyber-Infrastructure Approach
- CI Data Flows
- CI Integration Architecture
- Data Integration Tools
- Demonstrate Data Management Tools



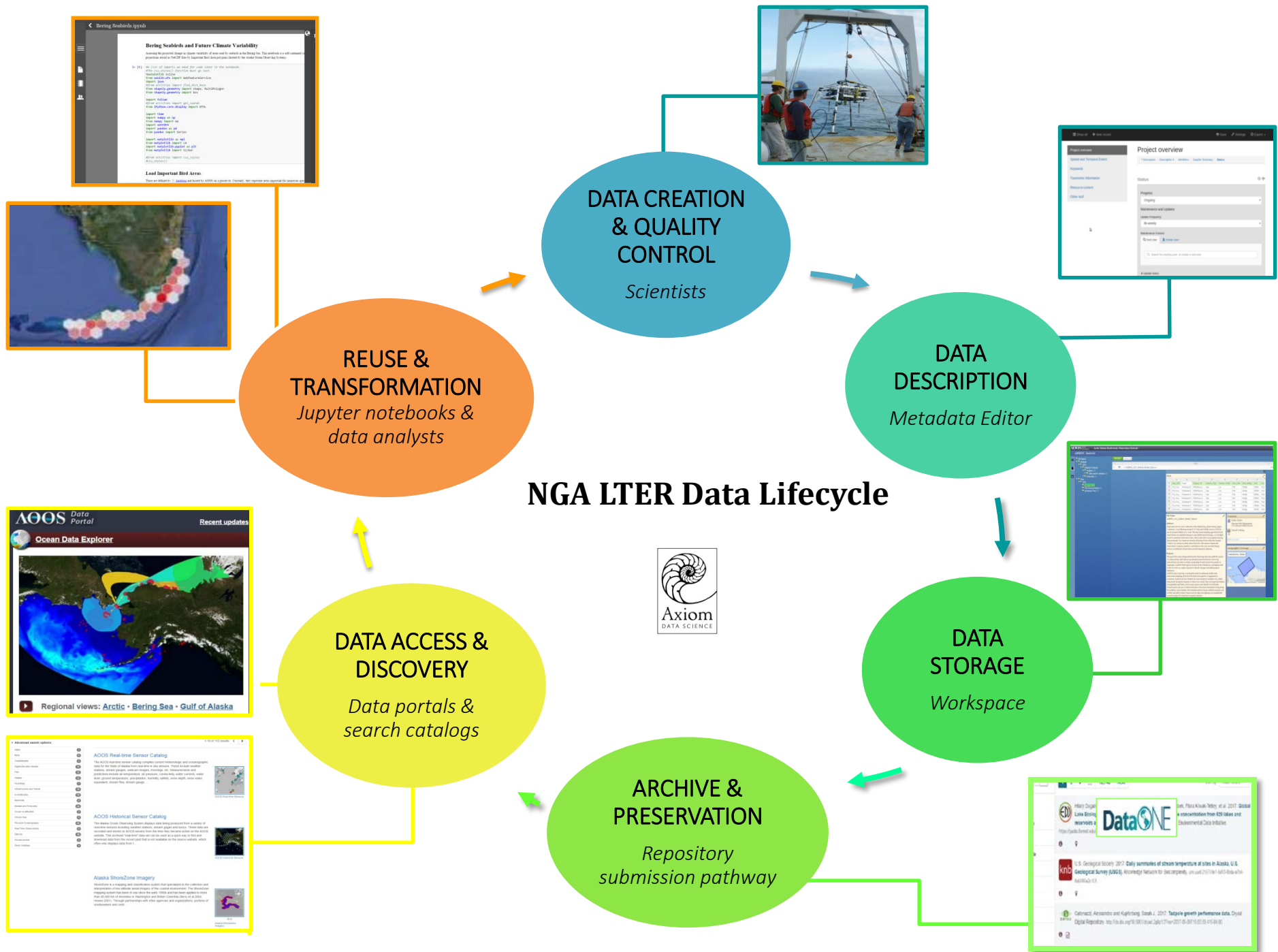
# Who is Axiom

- Develop data management and cyber infrastructure technology for environmental, biological and geoscientific data (numerical models, remote sensing, GIS, sensor networks and field campaigns)
- Small company (20 technical staff)
- AK Headquarters, OR and RI satellite offices
- Support several Federal, University and NGO Data Assembly Centers (IOOS, SECOORA, AOOS, BOEM, NAS, NSF, USGS Geomorphology Program, etc...)
- Mission Driven



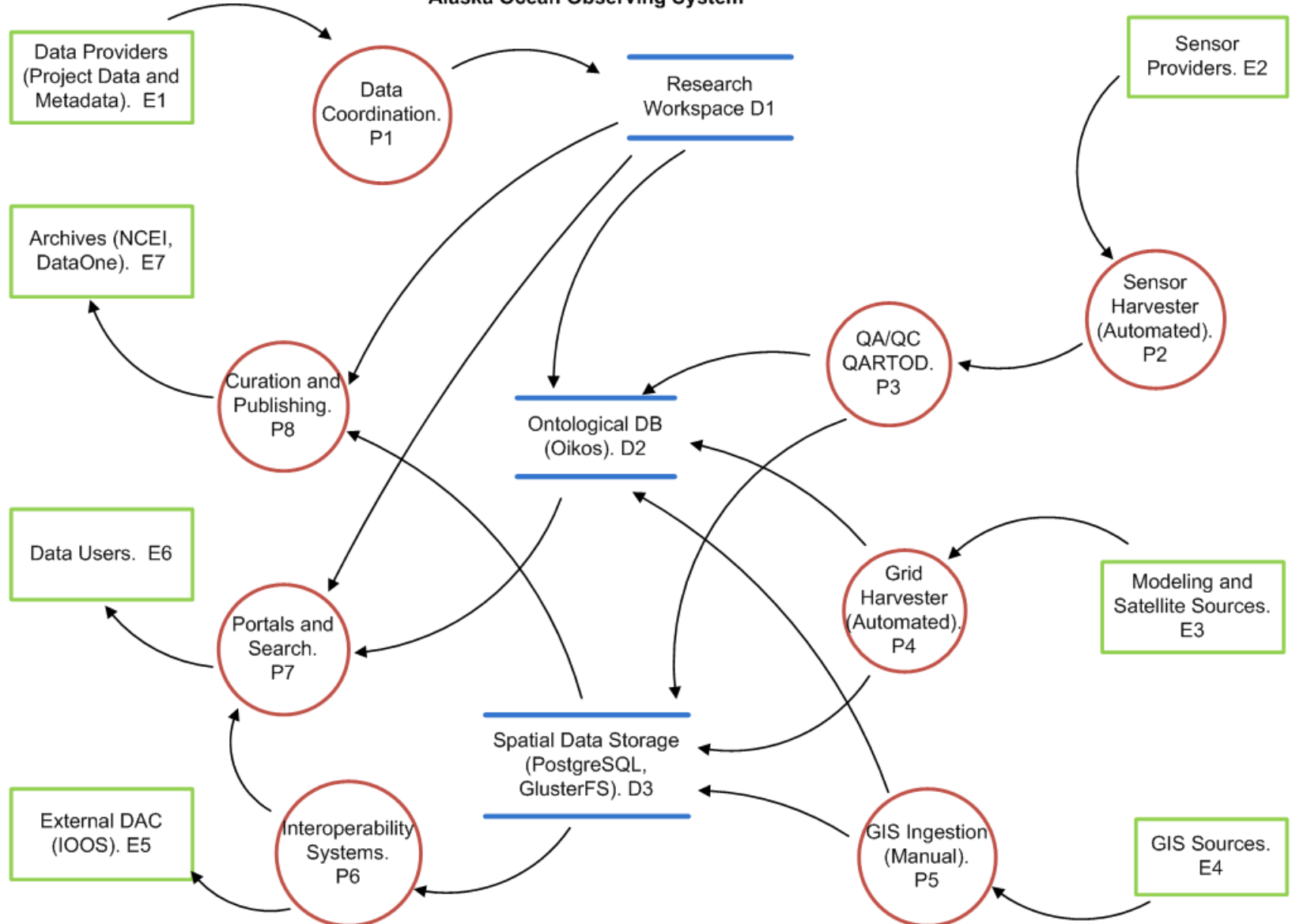
# Shared Cyber-Infrastructure

- Leverage applications, systems and hardware across several partners
- Functional improvements can be funded by one partner and shared with the collective
- Reduces costs and affect of funding instability while accelerating progress
- As more partners participate momentum increases
- Standardize systems and interfaces across partners
- Reach critical mass: makes the impossible actually possible



# Data Flows

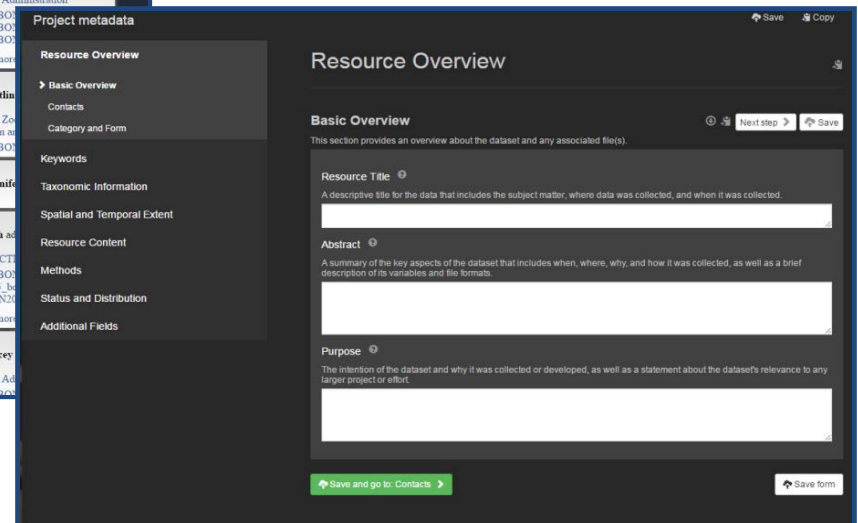
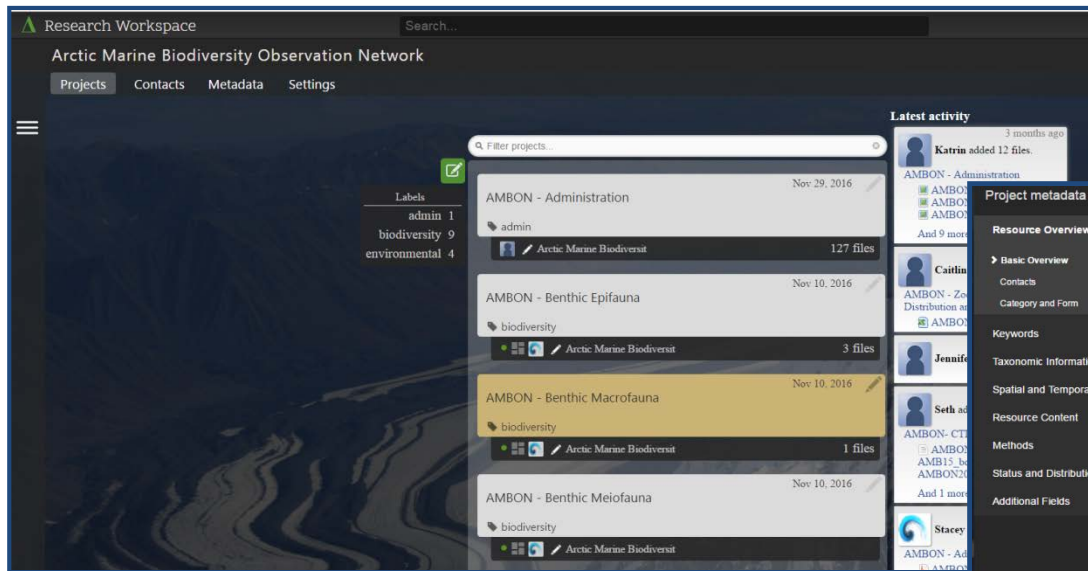
Level 1 (1.0) Data Flow Diagram  
Alaska Ocean Observing System





# Research Workspace

- Coordinate data exchange across networks
- Execute server side R and Python numeric workflows (Jupyter) on uploaded data AND any data in Oikos stack
- ISO 19110/19115-2 standards metadata editor
- Archive pathway to DataONE & Datacite DOI minting







# Integration and Interoperability: Oikos Stack

