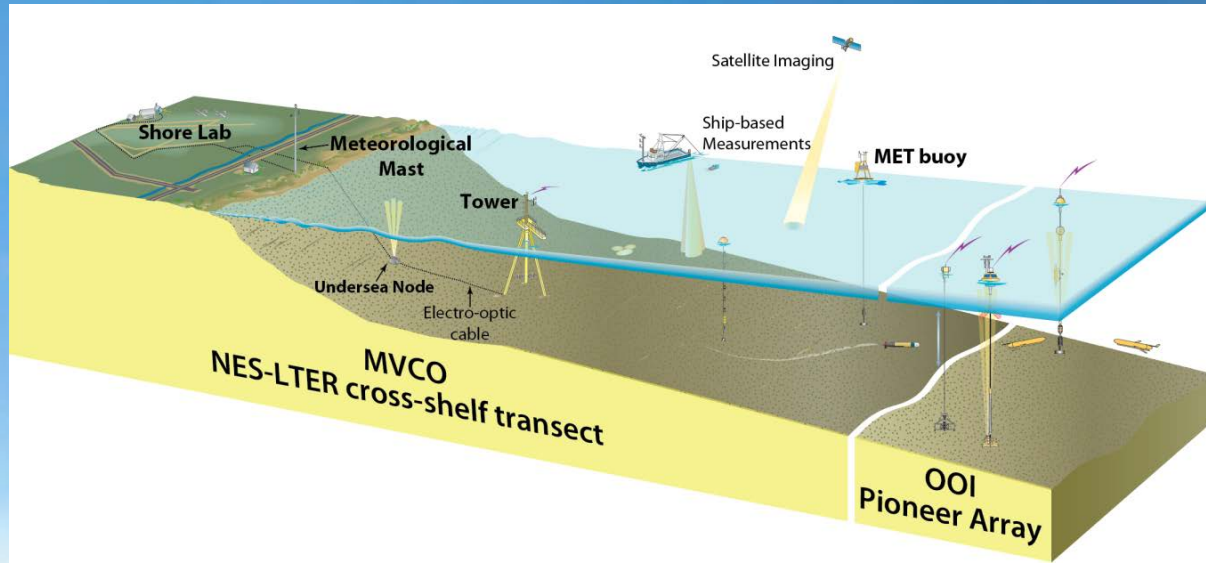
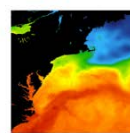


Northeast U.S. Shelf NES-LTER



Heidi M. Sosik, Woods Hole Oceanographic Institution
LTER SCIENCE COUNCIL MEETING 2018
MADISON, WI



NORTHEAST U.S. SHELF
Long-Term Ecological Research



NATIONAL SCIENCE FOUNDATION
LTER NETWORK
LONG TERM ECOLOGICAL RESEARCH

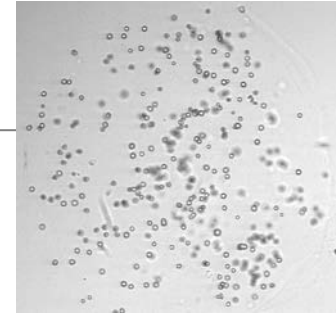
Site News

Observations

- Observatories (MVCO and OOI Pioneer Array)
- Regional ship surveys (ECOMON)
- Intensive cross-shelf transects

LTER Schoolyard Program

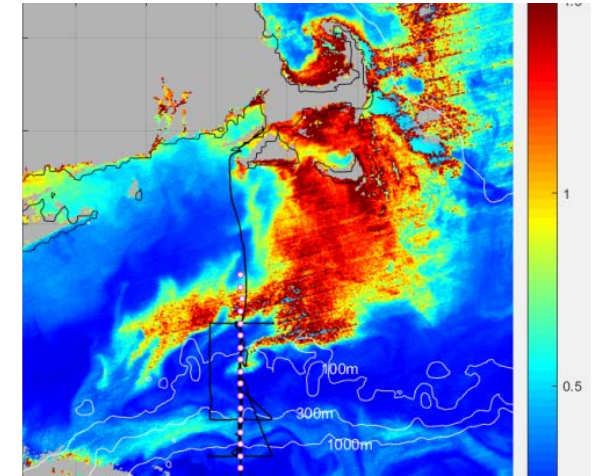
- Middle/high school teachers entrained
- Keynote at Mass. Marine Educators Conference



Phaeocystis colony
IFCB image from MVCO



Winter on the NES!



A very unusual *Phaeocystis* bloom

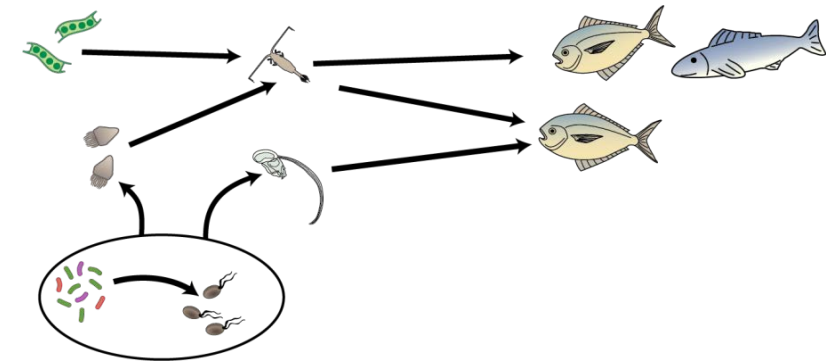
Regional Leveraging for Observational Coverage

	Sep 2017	Oct	Nov	Dec	Jan 2018	Feb	Mar	Apr
LTER only								
With new partnerships								

Organic Matter

What role does organic matter play at your site?

Focus on particulate organic matter and how it is influenced by seasonal and interannual changes in plankton and food web processes



What do you think you know about it?

Early observations principally at the nearshore MVCO site

Seasonality is evident in components, with some links to primary producers

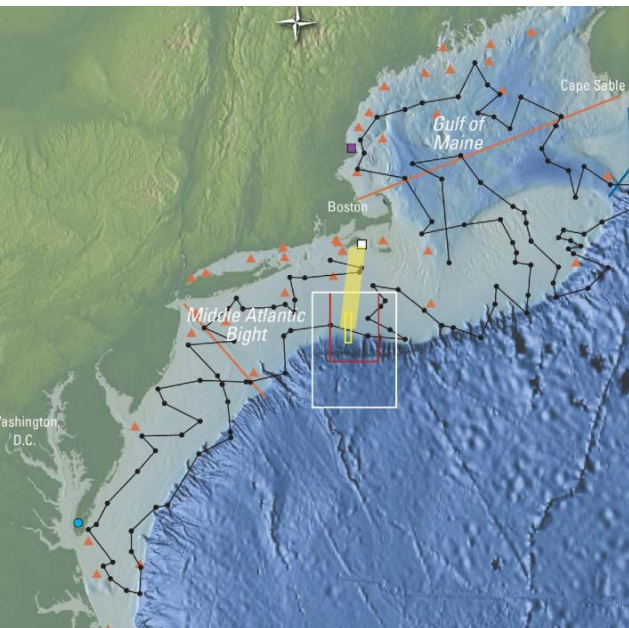
What are the known gaps or open questions?

To what extent do observations at MVCO reflect the broader shelf?

Roles of consumers and detrital matter?

How are changes in organic matter pools linked to food web transformations?

Limited direct observation of dissolved organic matter (only CDOM)



Organic Matter - Results

