

# **Environmental Data Initiative (EDI)**

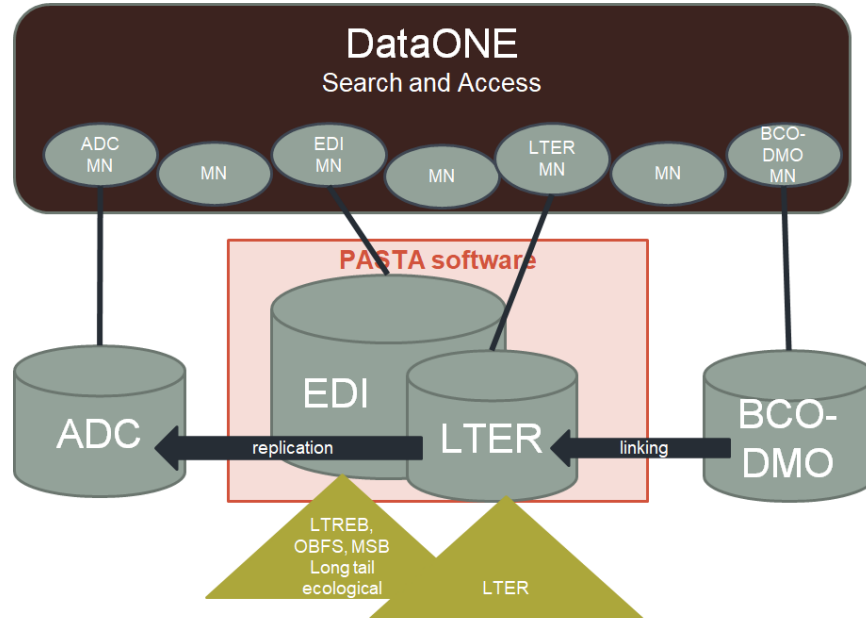


A short horizontal bar with a teal-to-orange gradient is positioned above the title.

# Data Repository

- Provide sustainable secure data repository to meet NSF requirements for publishing LTER data
- Trustworthiness certification
  - Early stages of CoreTrustSeal certification
  - Infrastructure audit
- Data Portal
  - Data provenance
  - Linking of data and publications
  - Improved use reports

# Interaction LTER repositories and DataONE



A horizontal bar with a teal segment on the left and an orange segment on the right.

# Data Management

- EML generation in R
- ClimDB/HydroDB
  - Maintained and working well
  - Needs updating -> next data harmonization initiative?
- ecocomDP - community observation datasets reformatted to standard

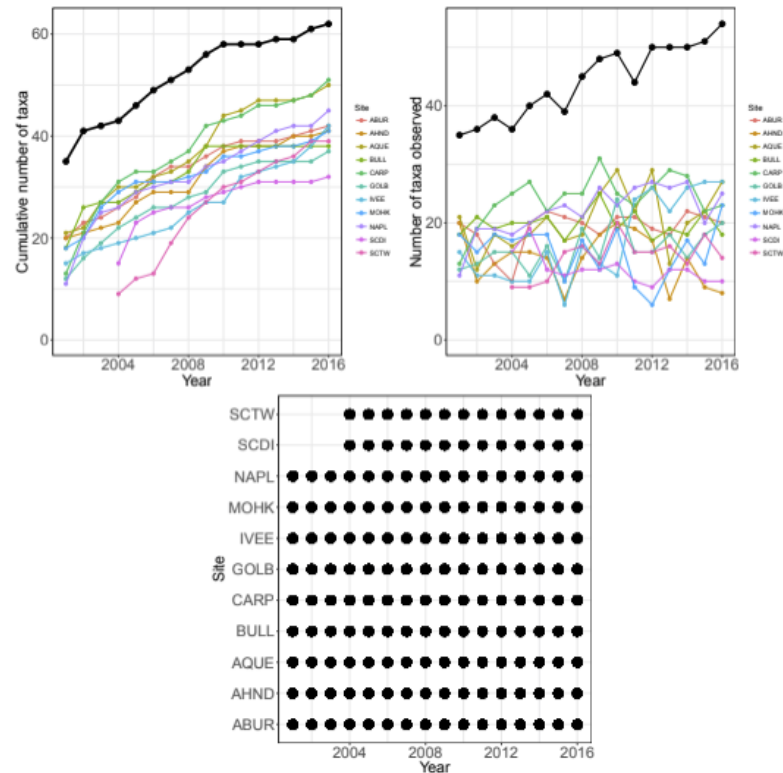
# ecocomDP

Standard format - no data loss

Taxonomic information

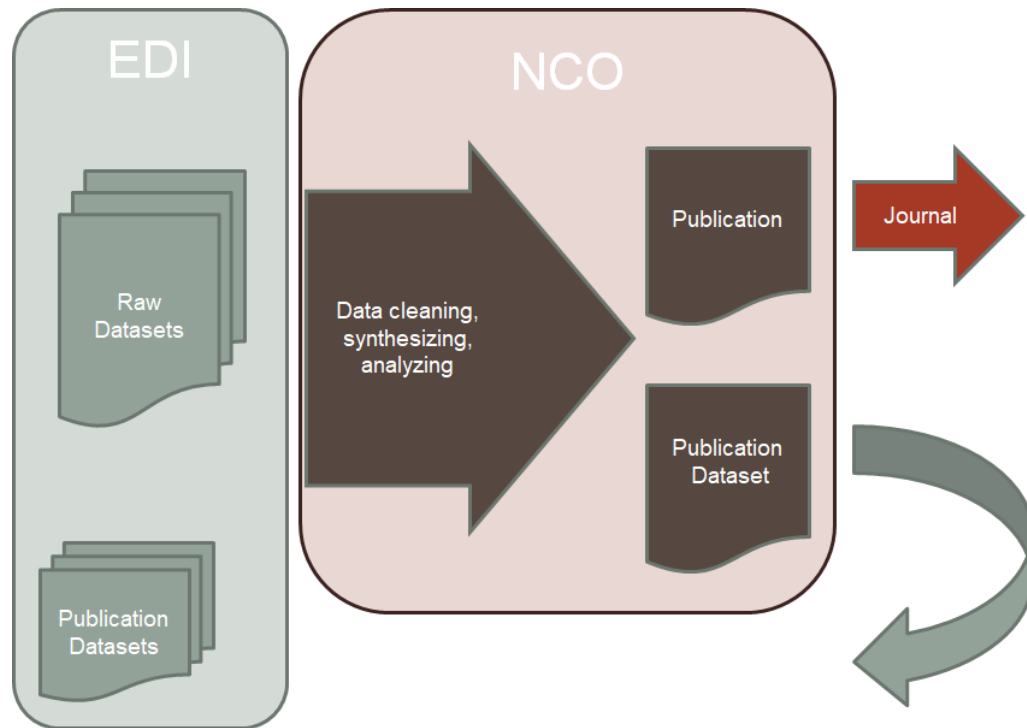
Sample nesting

Additional metadata fitness-for-use evaluation



# Synthesis Support

- Margaret O'Brien participates in NCO synthesis working groups
- Close collaboration with NCO's Julien Brun.
- Curating and archiving of synthesis products - when they become available
- Data products based on synthesis needs



# Outreach

- Training
  - Session in 2017 including 4 LTER IMs
  - Training workshops at meetings
  - Online webinars
  - Session in June 2018 including 2 LTER IMs
  - On-boarding of new LTER IMs
  - IM Fellowship - 6 fellows will work this summer at field stations
- ESA, AGU, ESIP, OBFS, others
  - Data help desk
  - Sessions
- Data management consultations (Single investigators and organizations)
- Website, newsletter, twitter feed, slack channel, YouTube channel



A horizontal bar with a teal segment on the left and an orange segment on the right.

# Team

- Corinna Gries (NTL LTER IM)
- Mark Servilla
- Kristin Vanderbilt (FCE LTER IM)
- Margaret O'Brien (SBC LTER IM)
- Duane Costa
- Colin Smith
- Susanne Grossman-Clarke
- Paul Hanson
- Bob Waide
- James Brunt